

WAAS CH 45507 W15A	APP CRS 153°	Rwy Ldg TDZE Apt Elev 6001 82 82
--	------------------------	--

RNAV (GPS) RWY 15

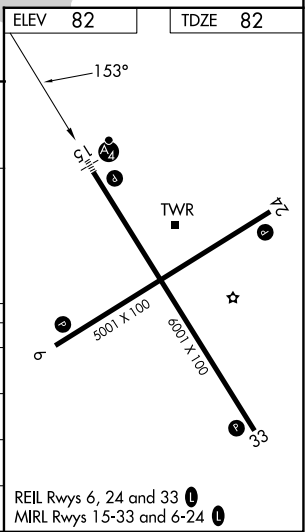
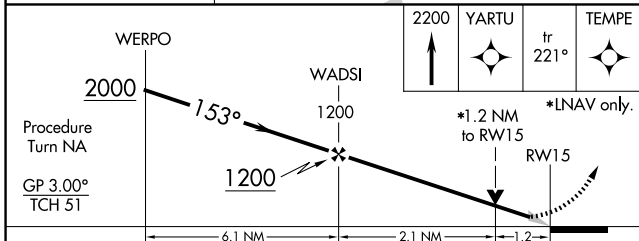
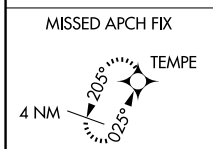
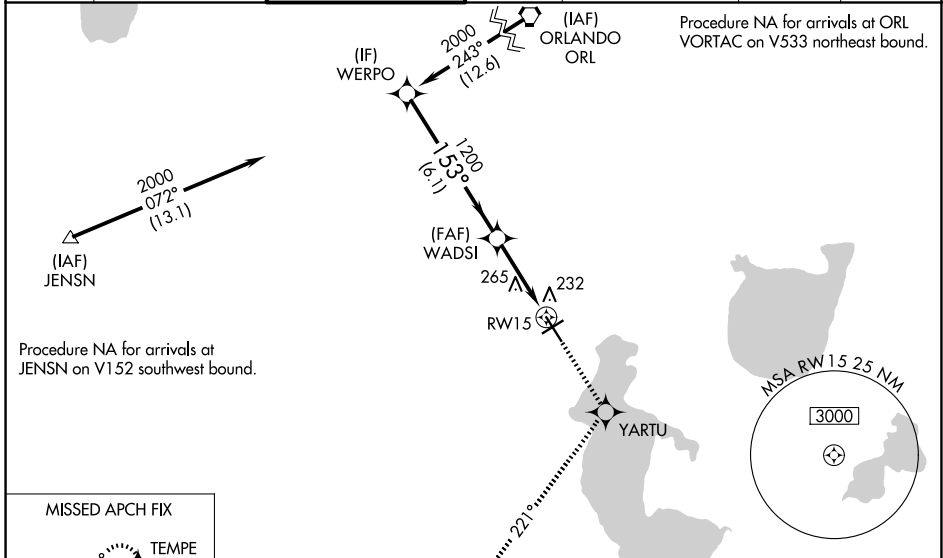
KISSIMMEE GATEWAY (ISM)

⚠ For uncompensated Baro-VNAV systems, LNAV/VNAV NA below -15°C (5°F) or above 48°C (118°F). DME/DME RNP-0.3 NA. VDP and Baro-VNAV NA when using Orlando Intl altimeter setting. Inoperative table does not apply to LNAV/VNAV all Cats and LNAV Cat C. When local altimeter setting not received, use Orlando Intl altimeter setting and increase LPV DA all Cats to 309, LNAV/VNAV DA all Cats to 559, and all MDA 40 feet; increase LNAV/VNAV all Cats and Circling Cat C visibility ¼ mile.

MALSF

MISSED APPROACH: Climb to 2200 direct YARTU and on track 221° to TEMPE and hold

ATIS 128.775	ORLANDO APP CON 119.4 351.9	KISSIMMEE TOWER * 124.45 (CTAF)	CLNC DEL 121.7	CLNC DEL 123.95 (When twr closed)	GND CON 121.7	UNICOM 122.95
------------------------	---------------------------------------	---	--------------------------	--	-------------------------	-------------------------



CATEGORY	A	B	C	D
LPV DA		282-¾	200 (200-¾)	
LNAV/VNAV DA		532-1½	450 (500-1½)	
LNAV MDA	520-¾	438 (500-¾)	520-1¼ 438 (500-1¼)	520-1½ 438 (500-1½)
CIRCLING	680-1	598 (600-1)	680-1½ 598 (600-1½)	700-2 618 (700-2)

SE-3, 16 APR 2026 to 14 MAY 2026

SE-3, 16 APR 2026 to 14 MAY 2026