

WAAS CH <b>42900</b> <b>W33A</b>	APP CRS <b>333°</b>	Rwy Ldg TDZE Apt Elev	<b>6001</b> <b>82</b> <b>82</b>
--	------------------------	-----------------------------	---------------------------------------

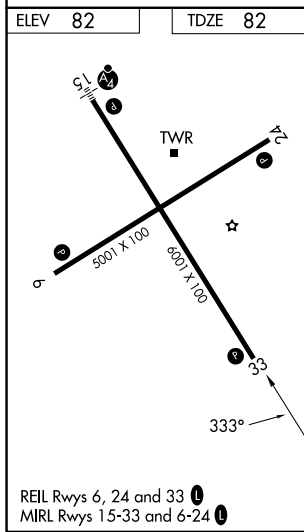
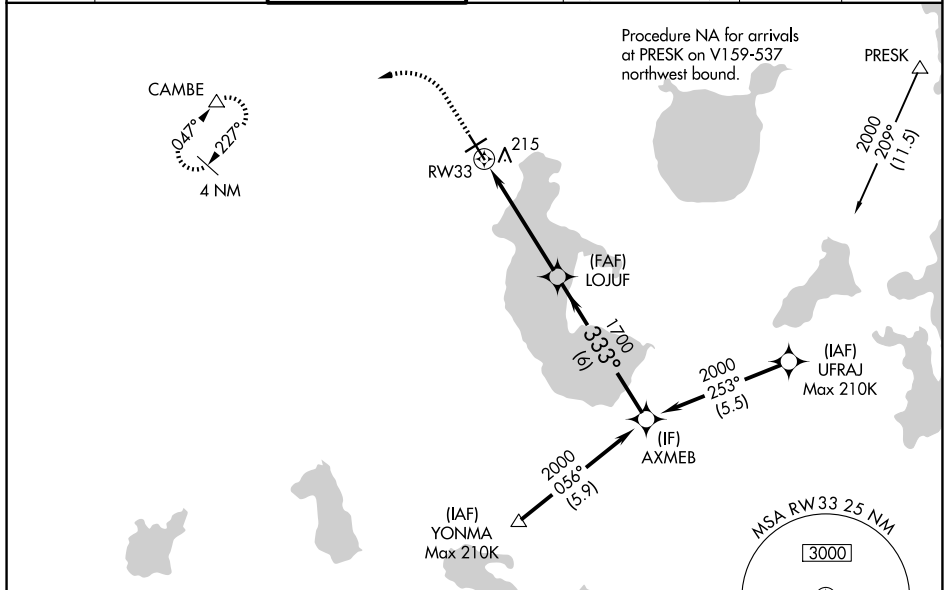
# RNAV (GPS) RWY 33

KISSIMMEE GATEWAY (ISM)

**⚠** Baro-VNAV NA when using Orlando Intl altimeter setting. For uncompensated Baro-VNAV systems, LNAV/VNAV NA below -1.5°C (5°F) or above 43°C (109°F). Helicopter visibility reduction below ¼ SM NA. DME/DME RNP-0.3 NA. When local altimeter setting not received, use Orlando Intl altimeter setting and increase all LPV DA to 359, all LNAV/VNAV DA to 429, and all MDA 40 feet; increase LNAV/VNAV all Cats visibility ½ SM, LNAV Cat C/D and Circling Cat C visibility ¼ SM.

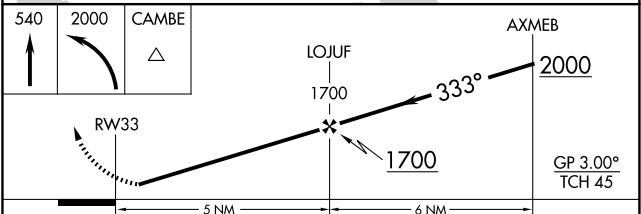
**MISSED APPROACH:** Climb to 540 then climbing left turn to 2000 direct CAMBE and hold.

ATIS <b>128.775</b>	ORLANDO APP CON <b>119.4 351.9</b>	KISSIMMEE TOWER * <b>124.45 (CTAF)</b> <b>📻</b>	CLNC DEL <b>121.7</b>	CLNC DEL <b>123.95</b> (When twr closed)	GND CON <b>121.7</b>	UNICOM <b>122.95</b>
------------------------	---------------------------------------	--	--------------------------	--	-------------------------	-------------------------



ELEV 82 TDZE 82

Procedure NA for arrivals at YONMA on V441 westbound.



CATEGORY	A	B	C	D
LPV DA	332-1 250 (300-1)			
LNAV/VNAV DA	402-1 320 (400-1)			
LNAV MDA	480-1 398 (400-1)		480-1½ 398 (400-1½)	
CIRCLING	620-1 538 (600-1)		680-1½ 700-2 598 (600-1½) 618 (700-2)	

SE-3, 16 APR 2026 to 14 MAY 2026

SE-3, 16 APR 2026 to 14 MAY 2026