

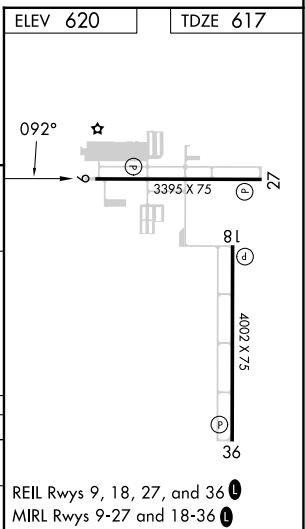
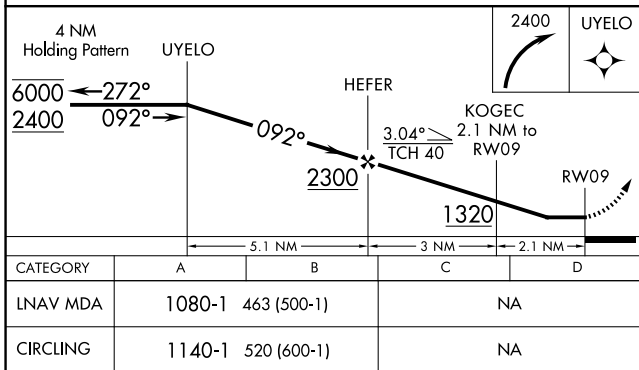
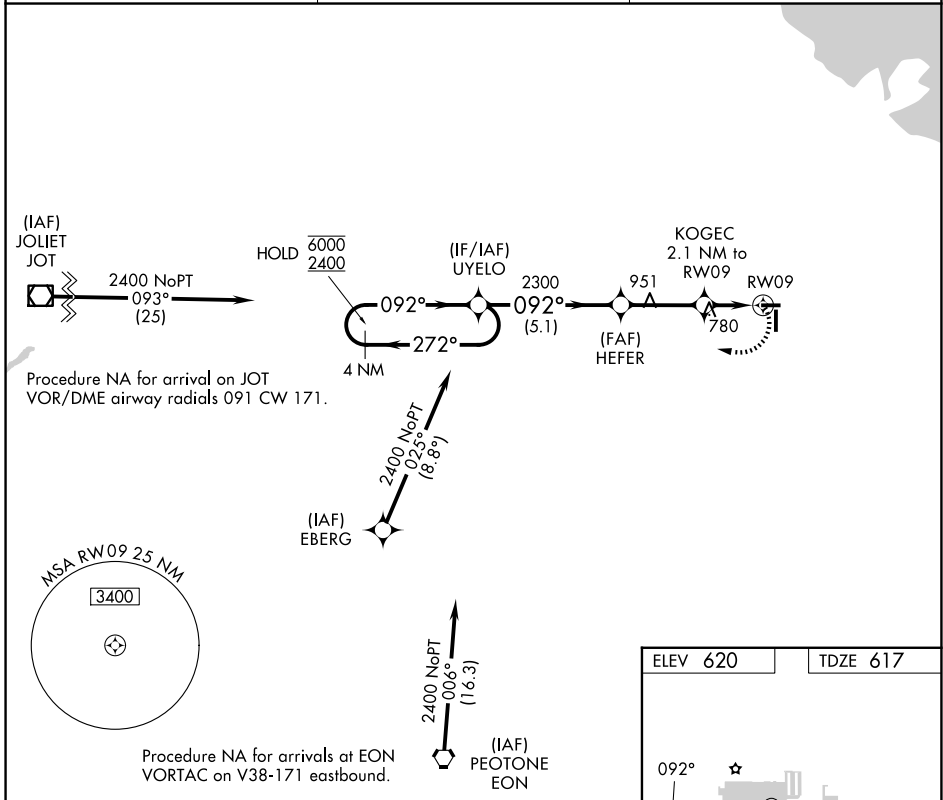
APP CRS	Rwy Ldg	3395
092°	TDZE	617
	Apt Elev	620

RNAV (GPS) RWY 9

LANSING MUNI (IGQ)

RNP APCH - GPS.	MISSED APPROACH: Climbing right turn to 2400 direct UYELO and hold.
Rwy 9 helicopter visibility reduction below 1 SM NA. Straight-in and Circling Rwy 9 NA at night.	

AWOS-3PT 124.925	CHICAGO APP CON 128.2 285.6	UNICOM 122.7 (CTAF) 0
----------------------------	---------------------------------------	---------------------------------



EC-3, 16 APR 2026 to 14 MAY 2026

EC-3, 16 APR 2026 to 14 MAY 2026