

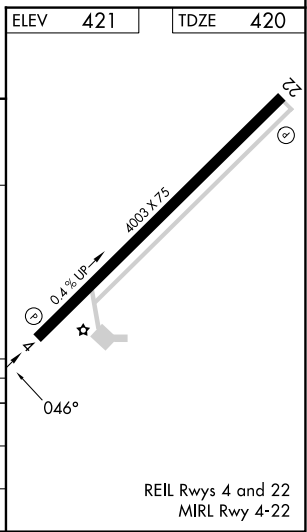
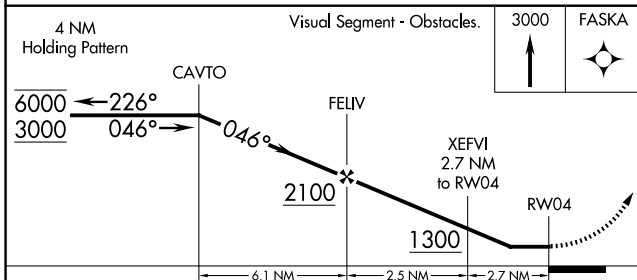
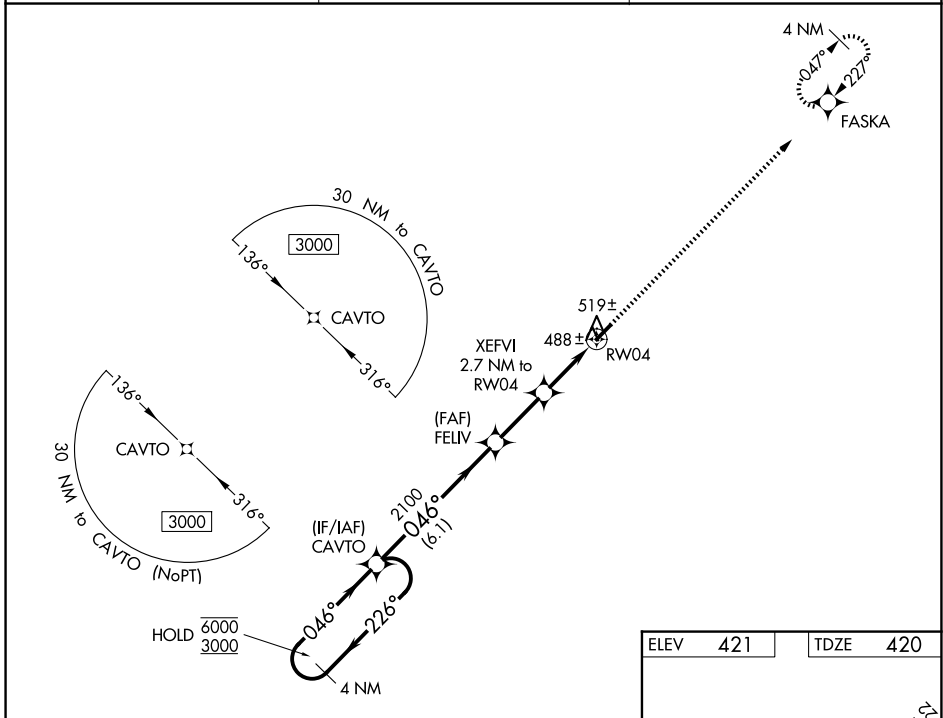
WAAS CH <b>78038</b> <b>W04A</b>	APP CRS <b>046°</b>	Rwy Ldg TDZE Apt Elev	<b>4003</b> <b>420</b> <b>421</b>
--	------------------------	-----------------------------	---

# RNAV (GPS) RWY 4

HUMBOLDT MUNI (M53)

RNP APCH - GPS.		MISSED APPROACH: Climb to 3000 direct FASKA and hold.
<p><b>▼</b> Rwy 4 helicopter visibility reduction below 1 SM NA. Use Jackson altimeter setting, when not received, use Dyersburg altimeter setting; increase all MDA 60 feet; increase LP Cats C/D visibility 1/8 mile; increase LNAV Cats C/D and Circling Cats C/D visibility 1/4 mile. Straight-in Rwy 4 NA at night, Circling Rwy 4 NA at night.</p> <p><b>▲</b> NA</p>		

MKL ASOS <b>119.325</b>	MEMPHIS CENTER <b>134.65 316.15</b>	UNICOM <b>122.8 (CTAF)</b>
----------------------------	--	-------------------------------



CATEGORY	A	B	C	D
LP MDA	780-1 360 (400-1)			
LNAV MDA	800-1 380 (400-1)			
CIRCLING	900-1 479 (500-1)	920-1 499 (500-1)	1120-2 699 (700-2)	1120-2 1/4 699 (700-2 1/4)

SE-1, 16 APR 2026 to 14 MAY 2026

SE-1, 16 APR 2026 to 14 MAY 2026