

| | | | |
|-------------------------|------------------------|-----------------------------|---|
| WAAS CH 40418 | APP CRS 296° | Rwy Idg TDZE Apt Elev | 4304 867 869 |
|-------------------------|------------------------|-----------------------------|---|

RNAV (GPS) RWY 29

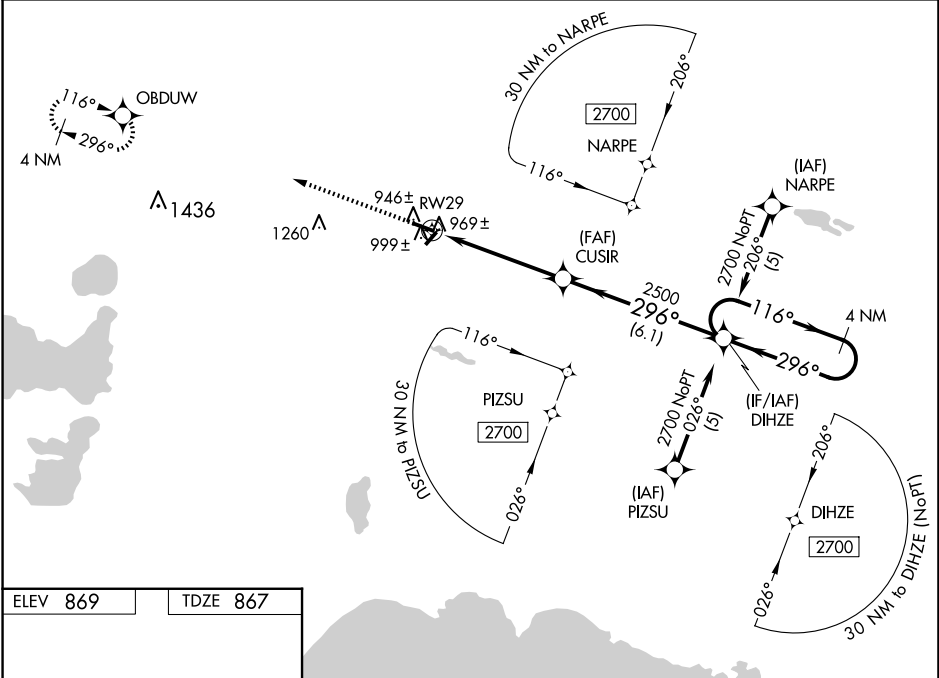
LUCE COUNTY (ERY)

RNP APCH - GPS.

▼ For uncompensated Baro-VNAV systems, LNAV/VNAV NA below -16°C or above 47°C. When local altimeter setting not received, use Chippewa County Intl altimeter setting and increase LPV DA to 1222 feet; increase LNAV/VNAV DA to 1344 feet; increase all MDAs 120 feet and LNAV visibility Cat C 3/8 SM and Cat D 1/8 SM, and Circling visibility Cat C/D 1/2 SM. Baro-VNAV NA when using Chippewa County Intl altimeter setting. Circling NA to Rwy 4 and 22. Rwy 29 helicopter visibility reduction below 3/4 NA.

MISSED APPROACH:
Climb to 2700 direct
OBDUW and hold.

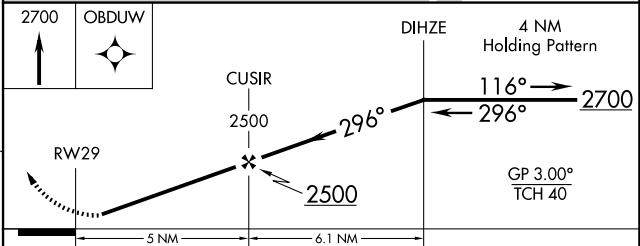
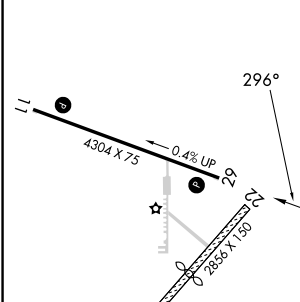
| | | |
|---------------------------|---|---------------------------------|
| AWOS-3P 119.525 | MINNEAPOLIS CENTER 134.6 354.05 | UNICOM 122.8 (CTAF) 0 |
|---------------------------|---|---------------------------------|



EC-1, 16 APR 2026 to 14 MAY 2026

EC-1, 16 APR 2026 to 14 MAY 2026

| | |
|----------|----------|
| ELEV 869 | TDZE 867 |
|----------|----------|



| CATEGORY | A | B | C | D |
|--------------|-----------------------|-----------------------|-------------------------|-------------------------|
| LPV DA | 1117-1 | | 250 (300-1) | |
| LNAV/VNAV DA | 1239-1½ | | 372 (400-1½) | |
| LNAV MDA | 1260-1 | | 393 (400-1) | |
| CIRCLING | 1300-1 431 (500-1) | 1380-1 511 (600-1) | 1460-1½ 591 (600-1½) | 1560-2¼ 691 (700-2¼) |

MIRL Rwy 11-29
REIL Rwy 11 and 29