

WAAS CH <b>66008</b> <b>W18A</b>	APP CRS <b>181°</b>	Rwy Idg <b>5002</b> TDZE <b>239</b> Apt Elev <b>239</b>
--	------------------------	---

# RNAV (GPS) RWY 18

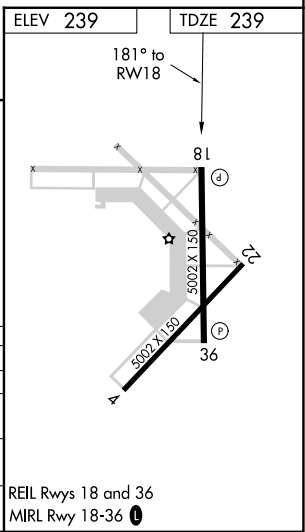
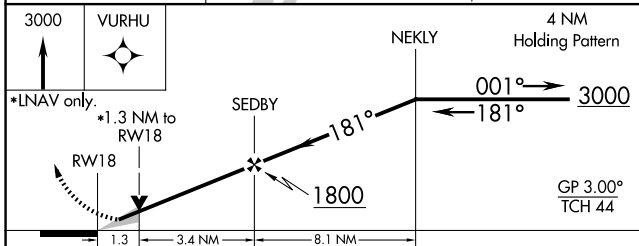
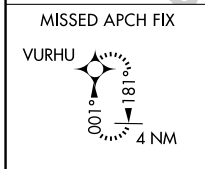
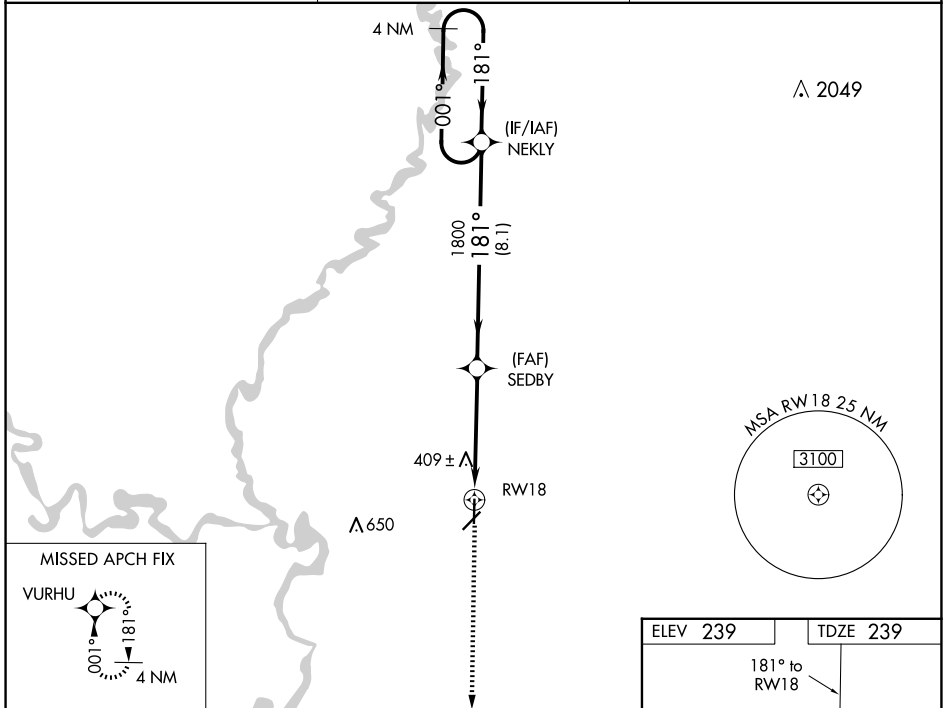
NEWPORT RGNL (M19)

RNP APCH-GPS.

⚠ When local altimeter setting not received, use Batesville altimeter setting: increase LPV DA to 575 feet and all visibilities ½ SM; increase LNAV/VNAV DA to 845 feet and all visibilities ½ SM; increase all MDAs 100 feet and visibility Cats C ¼ SM and D ½ SM. VDP NA when using Batesville altimeter setting. For uncompensated Baro-VNAV systems, LNAV/VNAV NA below -15°C or above 54°C. Baro-VNAV NA when using Batesville altimeter setting.

MISSED APPROACH: Climb to 3000 direct VURHU and hold.

AWOS-3PT <b>118.15</b>	MEMPHIS CENTER <b>120.075 289.4</b>	UNICOM <b>122.8 (CTAF) ①</b>
---------------------------	--	---------------------------------



CATEGORY	A	B	C	D
LPV DA	489-¾ 250 (300-¾)			
LNAV/VNAV DA	759-1¾ 520 (600-1¾)			
LNAV MDA	700-1	461 (500-1)	700-1¼ 461 (500-1¼)	700-1½ 461 (500-1½)
CIRCLING	760-1	521 (600-1)	760-1½ 521 (600-1½)	900-2 661 (700-2)

REIL Rwy 18 and 36  
MIRL Rwy 18-36 ①

SC-1, 16 APR 2026 to 14 MAY 2026

SC-1, 16 APR 2026 to 14 MAY 2026