

VORTAC RQZ <b>112.2</b> Chan <b>59</b>	APP CRS <b>010°</b>	Rwy Idg <b>5500</b> TDZE <b>978</b> Apt Elev <b>984</b>
----------------------------------------------	------------------------	---------------------------------------------------------------

# VOR/DME RWY 2

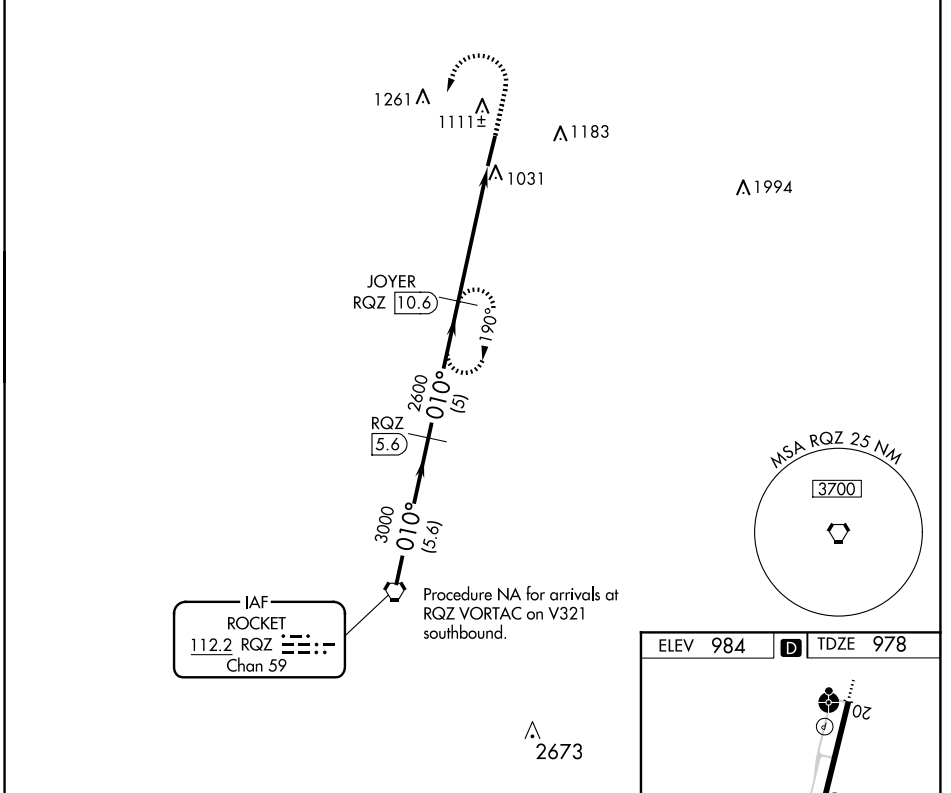
FAYETTEVILLE MUNI (FYM)

**⚠** When local altimeter setting not received, use Huntsville Exec Tom Sharp Jr Fld altimeter setting and increase all MDA 120 feet; increase S-2 Cat C/D visibility ¼ SM, Circling Cat C visibility ½ SM, and Circling Cat D visibility ¼ SM. Rwy 2 helicopter visibility reduction below ¾ SM NA.

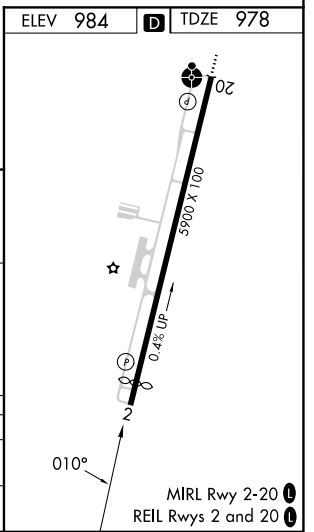
**⚠** NA

MISSED APPROACH: Climb to 2000 then climbing left turn to 3000 via RQZ R-010 to JOYER INT and hold.

AWOS-3 <b>135.275</b>	HUNTSVILLE APP CON * <b>125.6 354.1</b>	CLNC DEL (GCO) <b>121.725</b>	UNICOM <b>122.8 (CTAF) 0</b>
--------------------------	--------------------------------------------	----------------------------------	---------------------------------



RQZ VORTAC	VGSI and descent angles not coincident (VGSI 3.00/TCH 22).			
	4000	3000	2600	2000
Procedure Turn NA	010°	3.00° TCH 40	010°	010°
	5.6 NM	5 NM	5 NM	
CATEGORY	A	B	C	D
S-2	1400-1	422 (500-1)	1400-1¼ 422 (500-1¼)	1400-1½ 422 (500-1½)
CIRCLING	1420-1 436 (500-1)	1540-1 556 (600-1)	1580-1½ 596 (600-1½)	1580-2 596 (600-2)



SE-1, 16 APR 2026 to 14 MAY 2026

SE-1, 16 APR 2026 to 14 MAY 2026