

GARLAND SIX DEPARTURE

SC-2, 16 APR 2026 to 14 MAY 2026

**TOP ALTITUDE:
ASSIGNED BY ATC**

LONE STAR DEP CON
118.1 306.95
CLNC DEL
123.95
GND CON
123.95
DENTON TOWER ★
119.95 (CTAF)

TAKEOFF MINIMUMS
Rwys 18L/R, 36L/R: Standard.

RADAR and DME required.

TEXARKANA
116.3 TKX
Chan 110

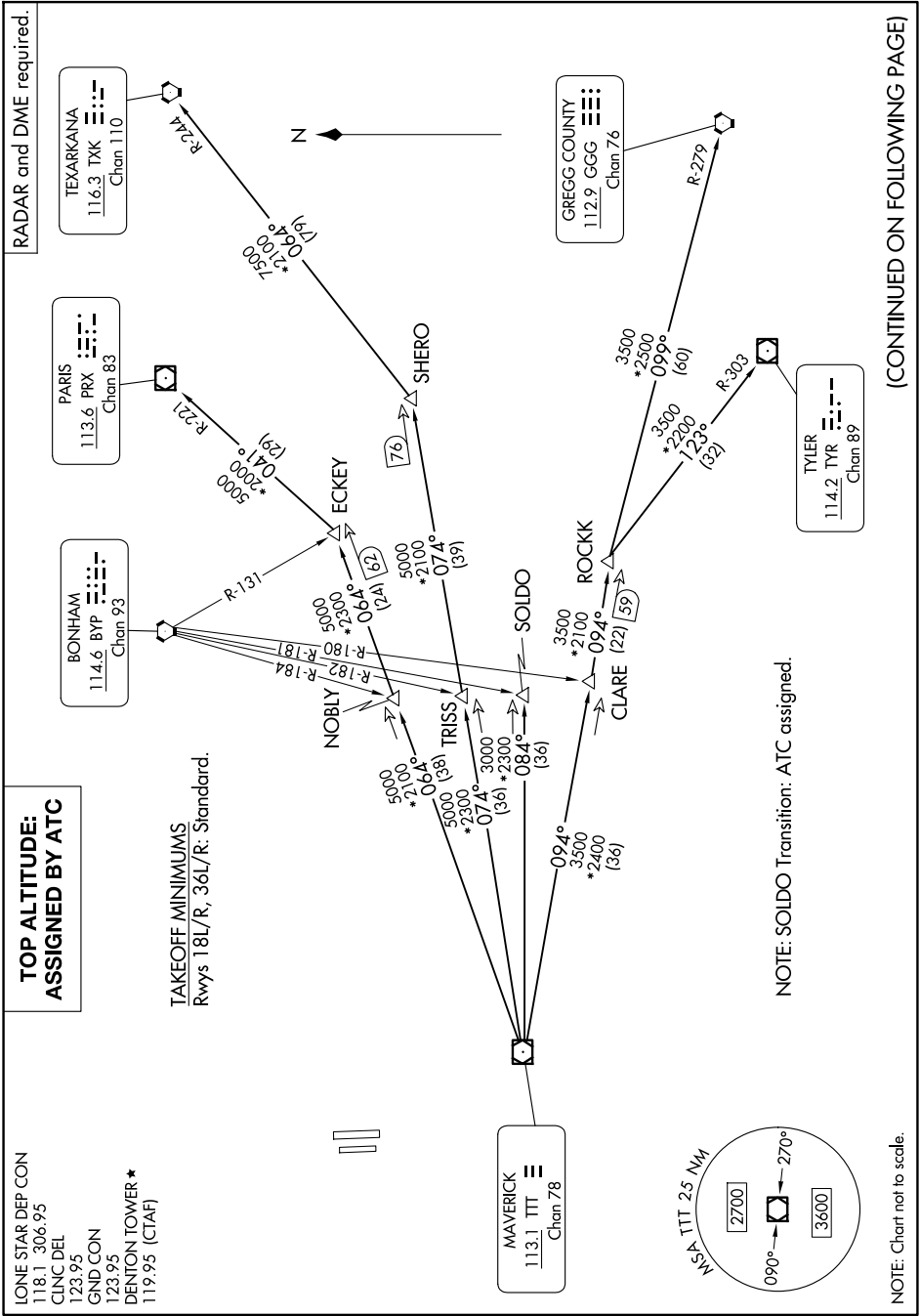
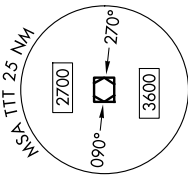
PARIS
113.6 PRX
Chan 83

BONHAM
114.6 BYP
Chan 93

GREGG COUNTY
112.9 GGG
Chan 76

TYLER
114.2 TYR
Chan 89

MAVERICK
113.1 TTT
Chan 78



NOTE: SOLDO Transition: ATC assigned.

NOTE: Chart not to scale.

(CONTINUED ON FOLLOWING PAGE)

SC-2, 16 APR 2026 to 14 MAY 2026