

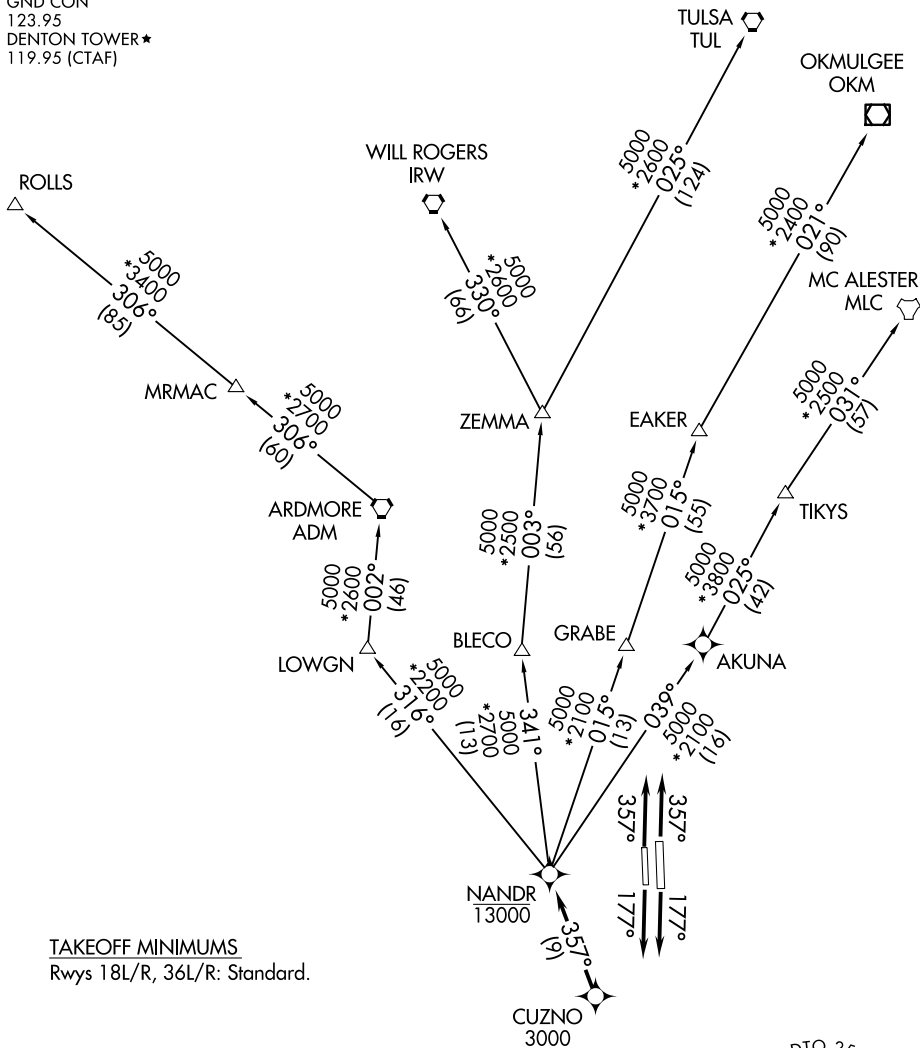
NANDR THREE DEPARTURE (RNAV)

DENTON, TEXAS

LONE STAR DEP CON
 118.1 306.95
 CLNC DEL
 123.95
 GND CON
 123.95
 DENTON TOWER★
 119.95 (CTAF)

RNAV 1 - DME/DME/IRU or GPS.
 RADAR required.

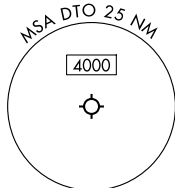
**TOP ALTITUDE:
 ASSIGNED BY ATC**



TAKEOFF MINIMUMS

Rwys 18L/R, 36L/R: Standard.

NOTE: EAKER Transition: For TUL terminal arrivals only.
 NOTE: TULSA Transition: For all aircraft overflying TUL VORTAC.
 NOTE: Aircraft arriving to the Oklahoma City terminal area, file and expect the ZEMMA enroute transition.



NOTE: Chart not to scale.

(CONTINUED ON FOLLOWING PAGE)

NANDR THREE DEPARTURE (RNAV)

(NANDR3.NANDR) 17APR25

DENTON, TEXAS
DENTON ENTERPRISE (D'TO)

SC-2, 16 APR 2026 to 14 MAY 2026

SC-2, 16 APR 2026 to 14 MAY 2026