

WAAS CH 56306 W22A	APP CRS 218°	Rwy Ldg TDZE Apt Elev	5000 315 316
--	------------------------	-----------------------------	---

RNAV (GPS) RWY 22

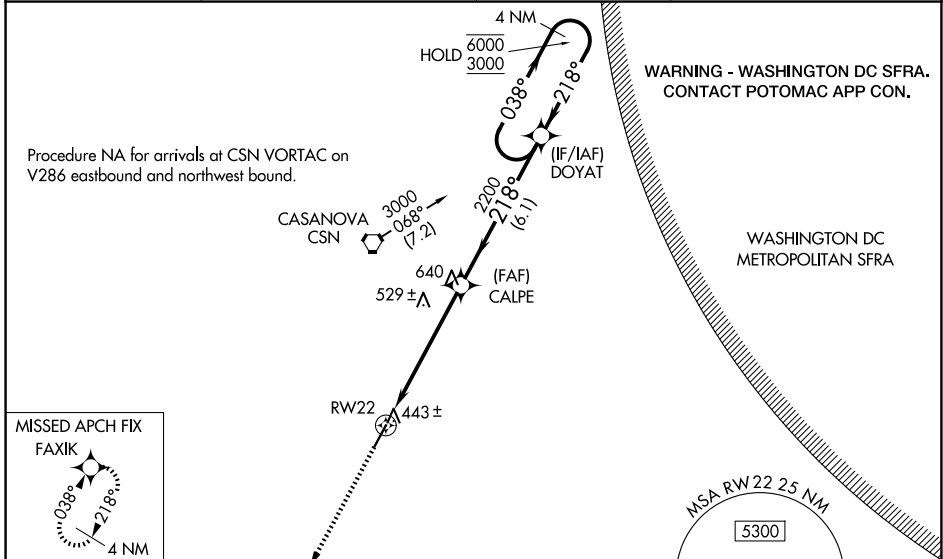
CULPEPER RGNL (CJR)

RNP APCH - GPS.

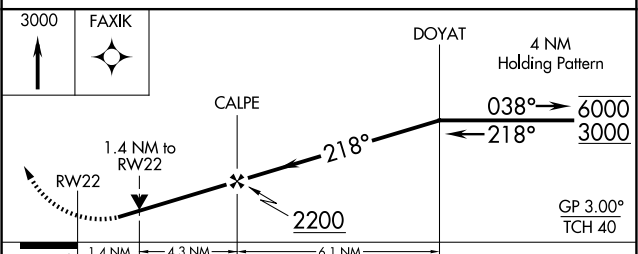
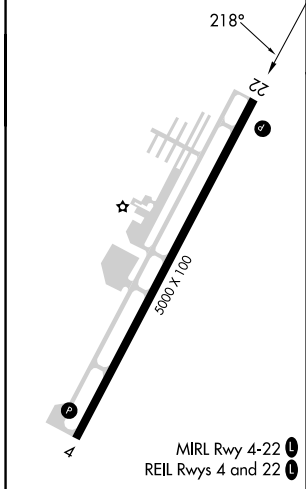
▼ Rwy 22 helicopter visibility reduction below 3/4 SM NA. For uncompensated Baro-VNAV systems, LNAV/VNAV NA below -15°C or above 48°C. Baro-VNAV and VDP NA when using IAD altimeter setting. When local altimeter setting not received, use IAD altimeter setting and increase LPV DA to 730 feet; increase LNAV/VNAV DA to 776 feet; increase all MDAs 80 feet and visibility Cats C 1/4 SM and D 1/2 SM.

▲ MISSED APPROACH: Climb to 3000 direct FAXIK and hold.

AWOS-3 119.325	POTOMAC APP CON 128.525 306.925	CLNC DEL 121.6	UNICOM 123.075 (CTAF) ①
--------------------------	---	--------------------------	-----------------------------------



ELEV 316	TDZE 315
----------	----------



CATEGORY	A	B	C	D
LPV DA	657-1¼ 342 (400-1¼)			
LNAV/VNAV DA	703-1½ 388 (400-1½)			
LNAV MDA	800-1	485 (500-1)	800-1¼ 485 (500-1¼)	800-1½ 485 (500-1½)

NE-3, 16 APR 2026 to 14 MAY 2026

NE-3, 16 APR 2026 to 14 MAY 2026