

| | | | |
|---|------------------------|-----------------------------|---------------------------------------|
| LOC/DME I-OAJ 108.7 Chan 24 | APP CRS 052° | Rwy Ldg TDZE Apt Elev | 7100 89 93 |
|---|------------------------|-----------------------------|---------------------------------------|

ILS or LOC RWY 5

ALBERT J ELLIS (OAJ)

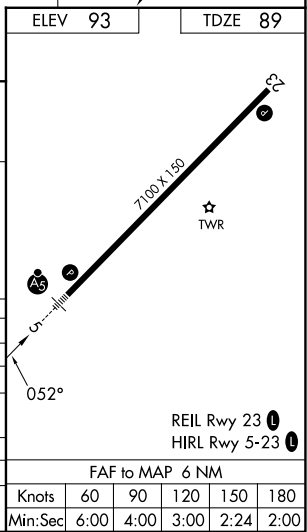
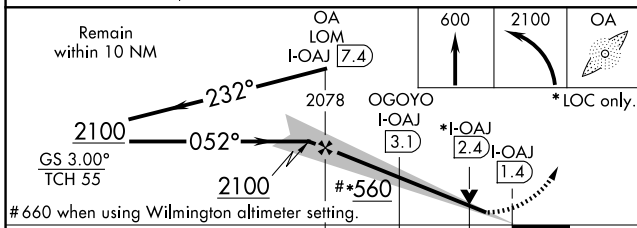
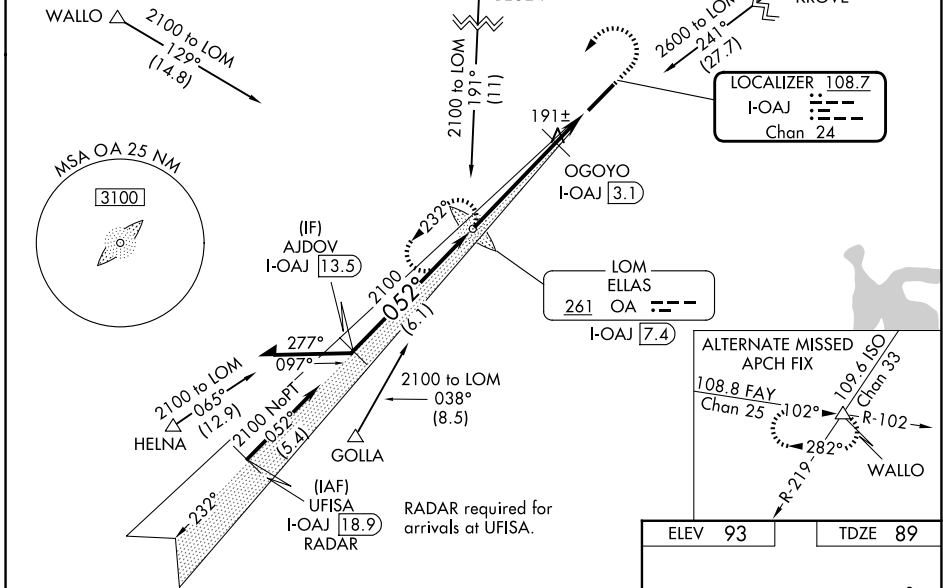
VDP NA with Wilmington altimeter setting. When local altimeter setting not received, use Wilmington altimeter setting and increase all DA to 382 feet; increase all MDAs 100 feet and visibility S-LOC 5 Cats C/D and Circling Cats C/D ¼ SM; OGOYO fix minimums: increase visibility S-LOC 5 Cats C/D ¾ SM and Circling Cats C/D ¼ SM. For inoperative MALSR, increase S-LOC 5 Cats C/D visibility to 1¾ mile, increase OGOYO fix minimums S-LOC 5 Cats C/D visibility to 1 mile. For inoperative MALSR when using Wilmington altimeter setting, increase S-ILS 5 all Cats visibility to ¾ mile, increase S-LOC 5 Cats C/D visibility to 1¾ mile, increase OGOYO fix minimums S-LOC 5 Cats C/D visibility to 1¾ mile. ADF required.

MALSR

MISSED APPROACH:
Climb to 600 then climbing left turn to 2100 direct ELLAS LOM/I-OAJ 7.4 DME and hold.

| | | | | |
|------------------------|---|---------------------------------------|-------------------------|-------------------------|
| ATIS 124.475 | WILMINGTON APP CON ★ 135.75 317.425 | ELLIS TOWER ★ 132.65 (CTAF) | GND CON 125.4 | UNICOM 122.95 |
|------------------------|---|---------------------------------------|-------------------------|-------------------------|

ADF or DME REQUIRED



| CATEGORY | A | B | C | D |
|-----------------------------------|----------------------|----------------------|------------------------|----------------------|
| S-ILS 5 | 289-½ 200 (200-½) | | | |
| S-LOC 5 | 560-½ | 471 (500-½) | 560-1 | 471 (500-1) |
| CIRCLING | 560-1 | 467 (500-1) | 720-1¾ 627 (700-1¾) | 720-2 627 (700-2) |
| OGOYO FIX MINIMUMS (DME REQUIRED) | | | | |
| S-LOC 5 | 460-½ | 371 (400-½) | 460-¾ | 371 (400-¾) |
| CIRCLING | 540-1 447 (500-1) | 560-1 467 (500-1) | 720-1¾ 627 (700-1¾) | 720-2 627 (700-2) |

SE-2, 16 APR 2026 to 14 MAY 2026

SE-2, 16 APR 2026 to 14 MAY 2026