

| | | | |
|--|------------------------|-----------------------------|---------------------------------------|
| WAAS CH 62827 W23A | APP CRS 232° | Rwy Ldg TDZE Apt Elev | 7100 93 93 |
|--|------------------------|-----------------------------|---------------------------------------|

RNAV (GPS) RWY 23

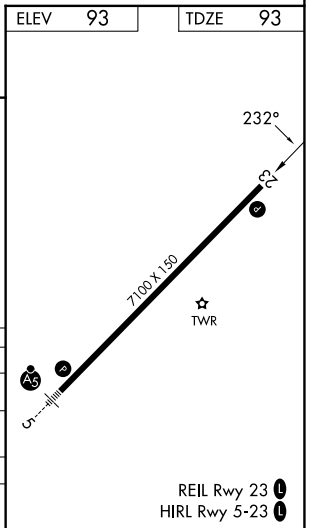
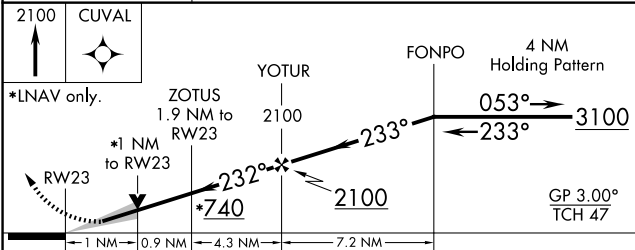
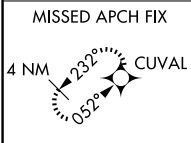
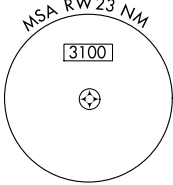
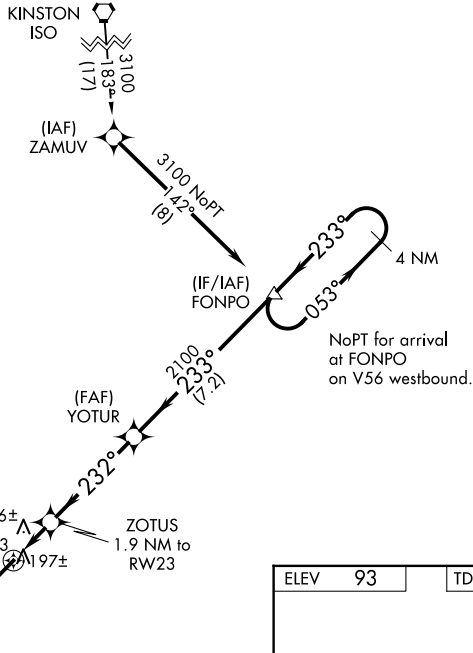
ALBERT J ELLIS (O.A.J)

⚠ Baro-VNAV NA when using Wilmington altimeter setting. For uncompensated Baro-VNAV systems, LNAV/VNAV NA below -15°C (5°F) or above 43°C (109°F). DME/DME RNP-0.3 NA. VDP NA with Wilmington altimeter setting. When local altimeter setting not received, use Wilmington altimeter setting and increase LPV DA to 387 feet and all visibilities ½ SM. Increase LNAV/VNAV DA to 591 feet; increase all MDAs 100 feet and LNAV visibility Cat C/D ¼ SM, and Circling visibility Cat C/D ¼ SM.

MISSED APPROACH:
Climb to 2100 direct
CUVAL and hold.

| | | | | |
|------------------------|---|--|-------------------------|-------------------------|
| ATIS 124.475 | WILMINGTON APP CON ★ 135.75 317.425 | ELLIS TOWER ★ 132.65 (CTAF) 0 | GND CON 125.4 | UNICOM 122.95 |
|------------------------|---|--|-------------------------|-------------------------|

Procedure NA for arrivals on ISO VORTAC
airway radials 130 CW 256.



| CATEGORY | A | B | C | D |
|--------------|----------------------|----------------------|------------------------|----------------------|
| LPV DA | | 293-¾ | 200 (200-¾) | |
| LNAV/VNAV DA | | 497-1⅓ | 404 (500-1⅓) | |
| LNAV MDA | | 460-1 | 367 (400-1) | |
| CIRCLING | 540-1 447 (500-1) | 560-1 467 (500-1) | 720-1¾ 627 (700-1¾) | 720-2 627 (700-2) |