

WAAS CH 82114 W18A	APP CRS 180°	Rwy Idg 3200 TDZE 295 Apt Elev 296
--	------------------------	---

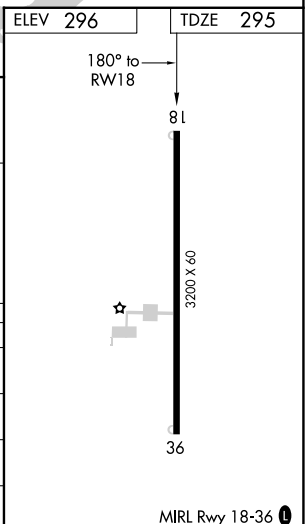
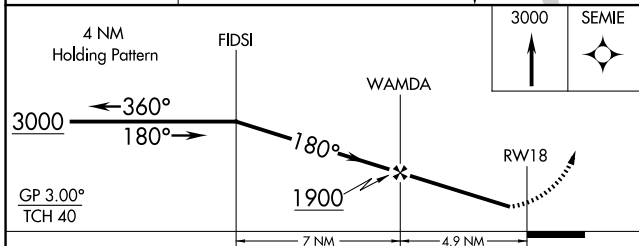
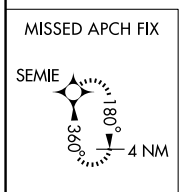
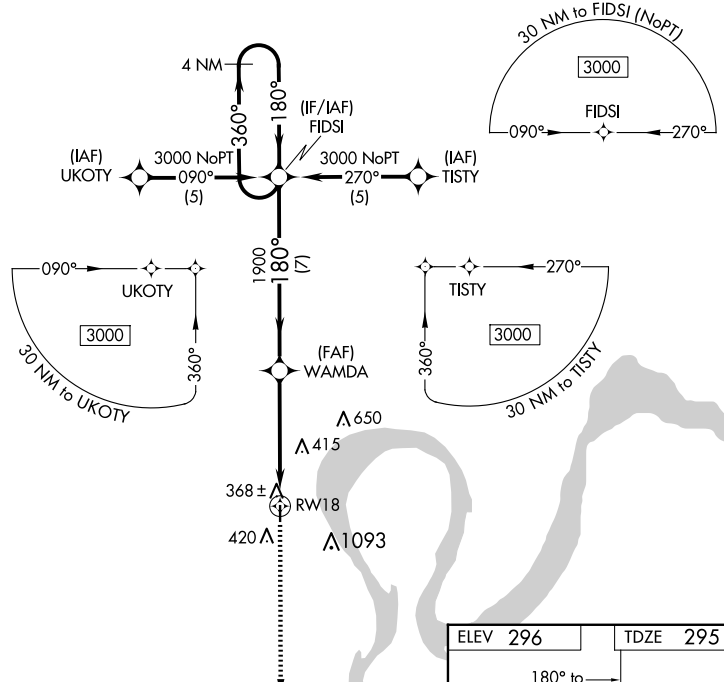
RNAV (GPS) RWY 18

COUNTY MEML (EIW)

▼ Circling to Rwy 36 NA at night. Baro-VNAV NA. DME/DME RNP-0.3 NA.
▲ NA Visibility reduction by helicopters NA. Use Dyersburg altimeter setting; when not received, use Cairo altimeter setting and increase all DA 5 feet and all MDA 20 feet.

MISSED APPROACH: Climb to 3000 direct SEMIE and hold.

DYR AWOS-3PT 135.625	MEMPHIS CENTER 133.65 292.15	UNICOM 122.8 (CTAF) 0
--------------------------------	--	---------------------------------



CATEGORY	A	B	C	D
LPV DA	628-1¼	333 (400-1¼)		NA
LNAV/VNAV DA	1016-2½	721 (800-2½)		NA
LNAV MDA	800-1	505 (600-1)		NA
CIRCLING	860-1 564 (600-1)	900-1 604 (700-1)		NA

NC-3, 16 APR 2026 to 14 MAY 2026

NC-3, 16 APR 2026 to 14 MAY 2026