

APP CRS <b>213°</b>	Rwy Ldg <b>3495</b>
	TDZE <b>763</b>
	Apt Elev <b>763</b>

# RNAV (GPS) RWY 22

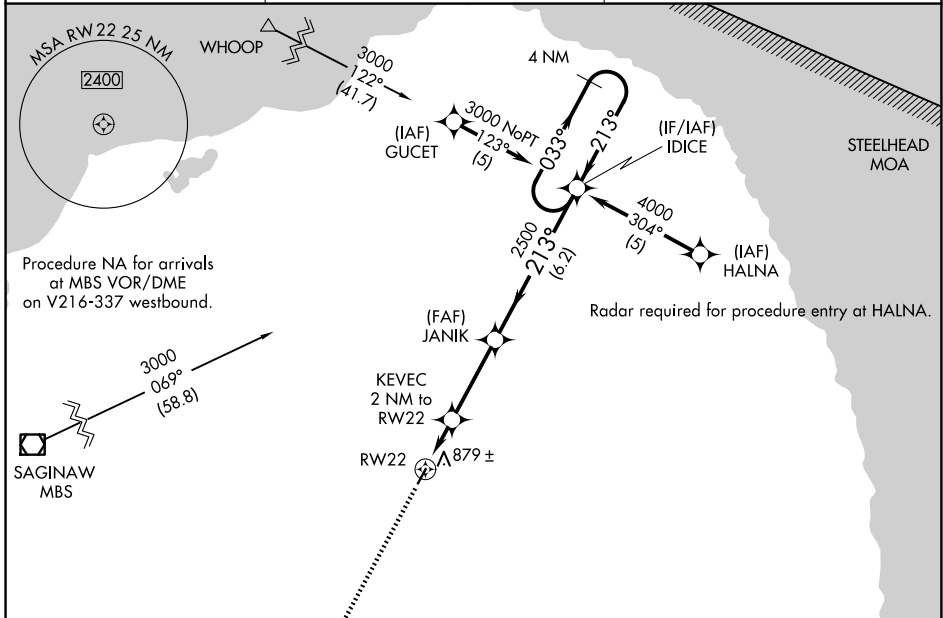
HURON COUNTY MEML (BAX)

RNP APCH.

When local altimeter setting not received, use MBS Intl altimeter setting and increase all MDA 140 feet; increase LNAV Cat C visibility 1/2 SM. Procedure NA at night. Rwy 22 helicopter visibility reduction below 1 SM NA.

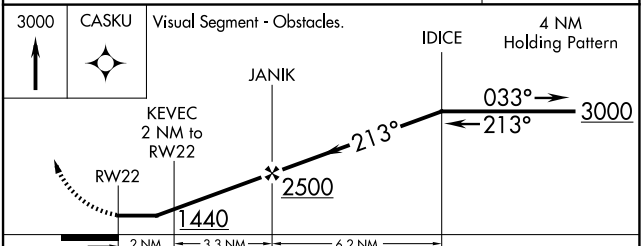
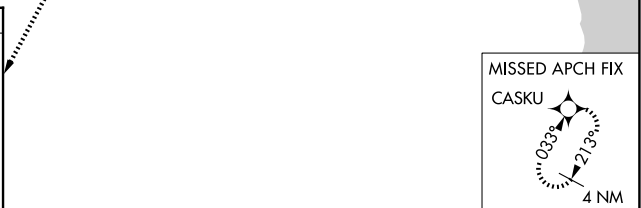
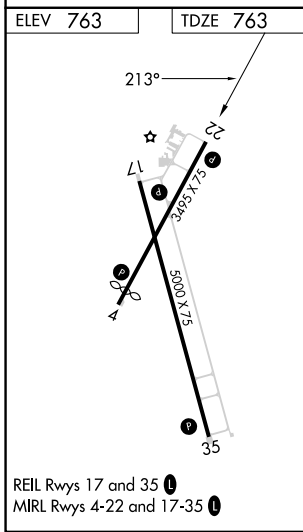
MISSED APPROACH: Climb to 3000 direct CASKU and hold.

AWOS-3P <b>118.6</b>	CLEVELAND CENTER <b>127.7 290.425</b>	UNICOM <b>123.075 (CTAF) 0</b>
-------------------------	--	-----------------------------------



EC-1, 16 APR 2026 to 14 MAY 2026

EC-1, 16 APR 2026 to 14 MAY 2026



CATEGORY	A	B	C	D
LNAV MDA	1140-1	377 (400-1)		NA