

WAAS CH 60940 W14A	APP CRS 135°	Rwy Ldg TDZE 1392 Apt Elev 1402
--	------------------------	---

RNAV (GPS) RWY 14

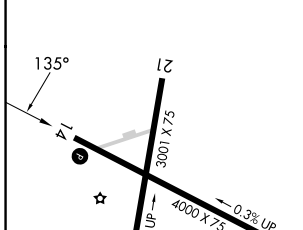
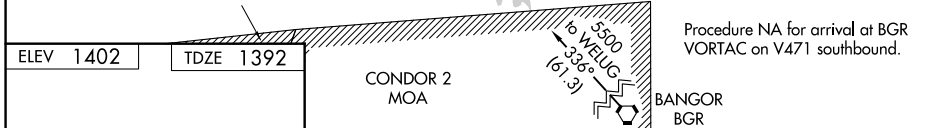
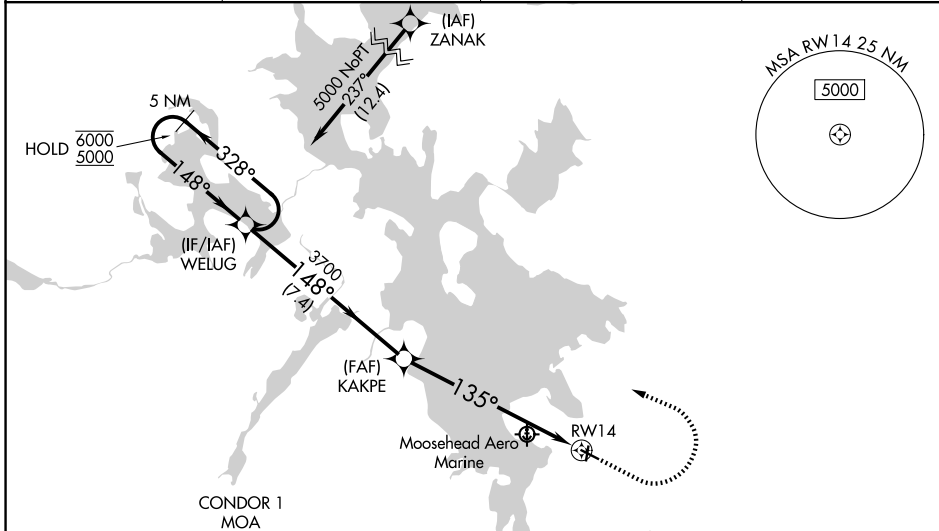
GREENVILLE MUNI (3B1)

RNP APCH - GPS.

NA Baro-VNAV and VDP NA when using BGR altimeter setting. For uncompensated Baro-VNAV systems, LNAV/VNAV NA below -23°C or above 54°C. Circling Rwy 3, 21 NA at night. Circling NA north of Rwy 14-32. When local altimeter setting not received, use BGR altimeter setting and increase LPV DA* to 1952 feet and all visibilities 5/8 SM. Increase LPV DA to 2490 feet and all visibilities 1/2 SM. Increase LNAV/VNAV DA to 2595 feet and all visibilities 1 SM. Increase all MDAs 300 feet.

MISSED APPROACH: Climb to 2800 then climbing left turn to 5000 direct WELUG and hold.
*Missed approach requires minimum climb of 215 feet per NM to 4200.

AWOS-A 124.175	BOSTON CENTER 120.25 346.4	CLNC DEL 122.3	UNICOM 122.8 (CTAF) 0
--------------------------	--------------------------------------	--------------------------	--



ELEV 1402	TDZE 1392
REIL Rwy 14 0	MIRL Rwy 14-32 0

5 NM Holding Pattern WELUG	2800	5000	WELUG
6000 ← 328°	3700	3.4 NM to RWY 14	
5000 → 148°	3700		
GP 3.00°	3700		
TCH 40			
	7.4 NM	3.8 NM	3.4 NM

CATEGORY	A	B	C	D
LPV DA*	1667-1 275 (300-1)			
LPV DA	2205-2 1/2 813 (900-2 1/2)			
LNAV/VNAV DA	2310-4 918 (1000-4)			
LNAV MDA	2500-1 1/4 1108 (1100-1 1/4)	2500-1 1/2 1108 (1100-1 1/2)	2500-3	1108 (1100-3)
CIRCLING	2500-1 1/4 1098 (1100-1 1/4)	2500-1 1/2 1098 (1100-1 1/2)	2500-3 1098 (1100-3)	2660-3 1258 (1300-3)

NE-1, 16 APR 2026 to 14 MAY 2026

NE-1, 16 APR 2026 to 14 MAY 2026