

APP CRS	Rwy Ldg	<b>3400</b>
<b>009°</b>	TDZE	<b>580</b>
	Apt Elev	<b>585</b>

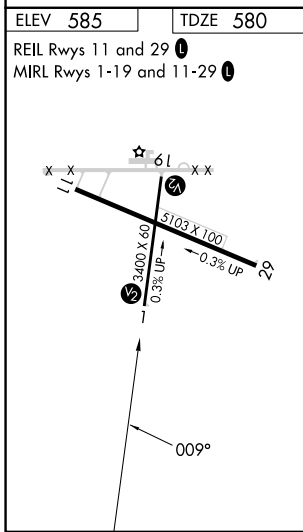
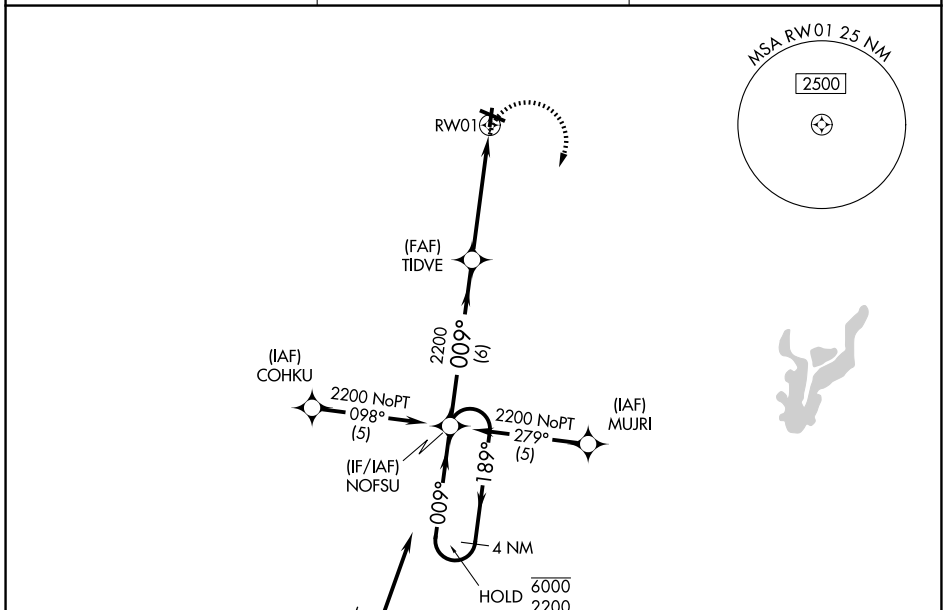
**RNAV (GPS) RWY 1**  
EFFINGHAM COUNTY RGNL (1H2)

RNP APCH - GPS.

▼ Rwy 1 helicopter visibility reduction below 1 SM NA. Straight-in Rwy 1 NA at night, Circling Rwy 1, 19 NA at night. When local altimeter setting not received, use Olney-Noble altimeter setting and increase all MDA 80 feet and increase LNAV visibility Cat C ¼ SM, and Circling visibility Cat C ¼ SM.

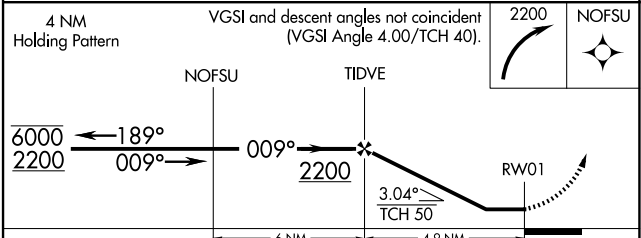
▲ MISSED APPROACH: Climbing right turn to 2200 direct NOFSU and hold.

AWOS-3PT <b>118.375</b>	KANSAS CITY CENTER <b>124.3 269.15</b>	UNICOM <b>122.725 (CTAF) 0</b>
----------------------------	---	-----------------------------------



Procedure NA for arrivals at CRATS on VS2 southwest bound.

(IAF) CRATS



CATEGORY	A	B	C	D
LNAV MDA	1020-1	440 (500-1)	1020-1¼ 440 (500-1¼)	NA
CIRCLING	1020-1 435 (500-1)	1140-1 555 (600-1)	1440-2½ 855 (900-2½)	NA

EC-3, 16 APR 2026 to 14 MAY 2026

EC-3, 16 APR 2026 to 14 MAY 2026