

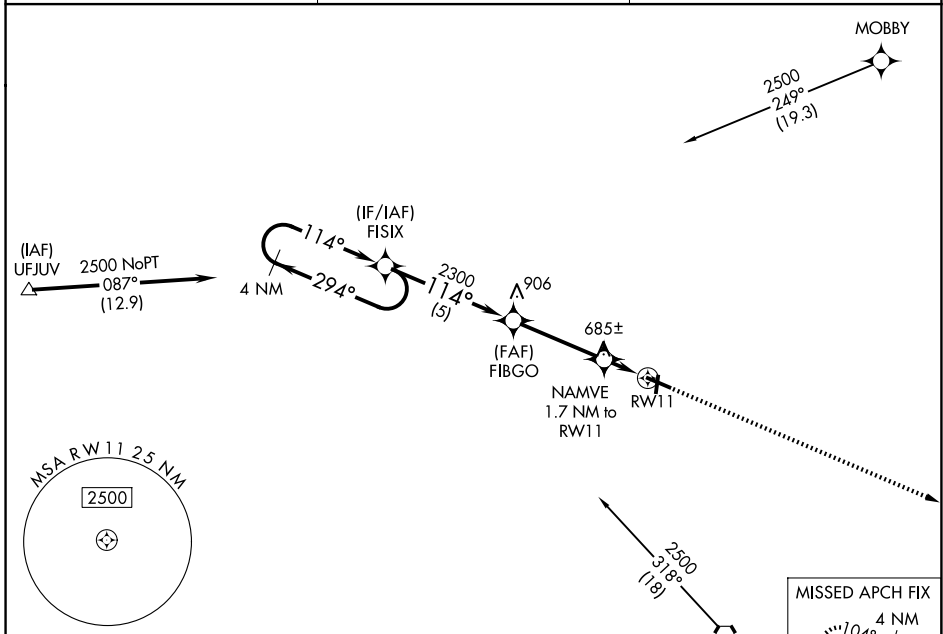
WAAS CH <b>99439</b> <b>W11A</b>	APP CRS <b>114°</b>	Rwy Ldg <b>5103</b> TDZE <b>585</b> Apt Elev <b>585</b>
--	------------------------	---

# RNAV (GPS) RWY 11

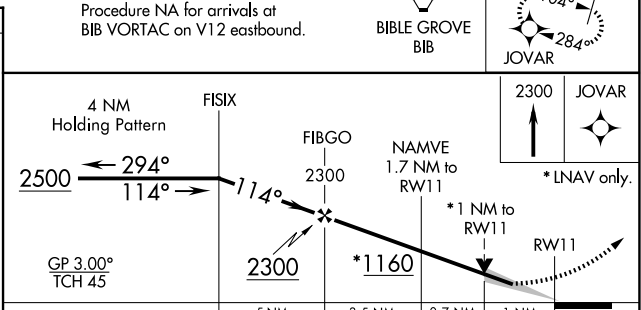
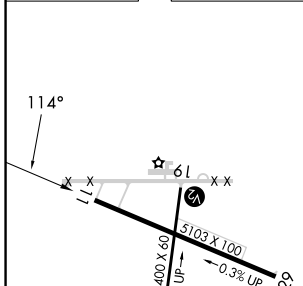
EFFINGHAM COUNTY RGNL (1H2)

RNP APCH.	<p><b>▽</b> For uncompensated Baro-VNAV systems, LNAV/VNAV NA below -16°C or above 54°C. Straight-in Rwy 1 NA at night, Circling Rwy 1, 19 NA at night.</p>	<p>MISSED APPROACH: Climb to 2300 direct JOVAR and hold.</p>
-----------	---	--

AWOS-3PT <b>118.375</b>	KANSAS CITY CENTER <b>124.3 269.15</b>	UNICOM <b>122.725</b> (CTAF) <b>0</b>
----------------------------	---	--



ELEV 585	TDZE 585
----------	----------



CATEGORY	A	B	C	D
LPV DA		835-1	250 (300-1)	
LNAV/VNAV DA		856-1	271 (300-1)	
LNAV MDA		940-1	355 (400-1)	
CIRCLING	1020-1 435 (500-1)	1140-1 555 (600-1)	1440-2½ 855 (900-2½)	1440-2¾ 855 (900-2¾)

REIL Rwy 11 and 29 **0**  
MIRL Rwy 1-19 and 11-29 **0**

EC-3, 16 APR 2026 to 14 MAY 2026

EC-3, 16 APR 2026 to 14 MAY 2026