

WAAS CH <b>45737</b> W16A	APP CRS <b>155°</b>	Rwy Ldg 4997 TDZE 82 Apt Elev 83
---------------------------------	------------------------	---

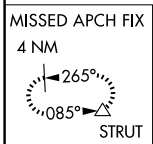
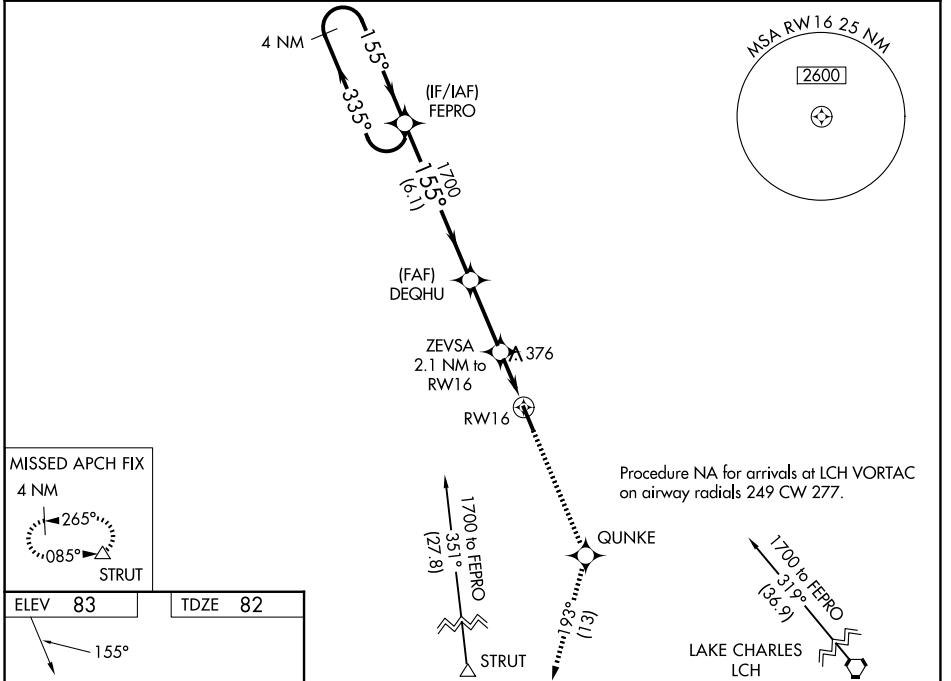
# RNAV (GPS) RWY 16

DE QUINCY INDUSTRIAL AIRPARK (5R8)

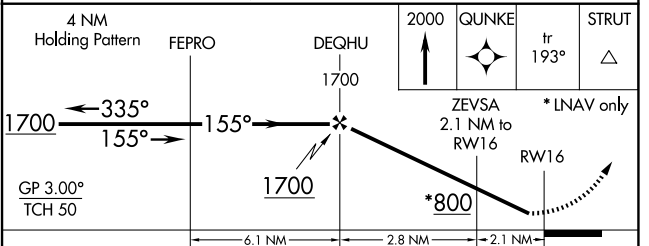
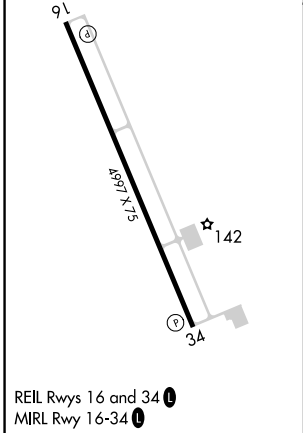
**Baro-VNAV NA** when using Sulphur altimeter setting. DME/DME RNP-0.3 NA.  
**NA** When local altimeter setting not received, use Sulphur altimeter setting and increase all DA 55 feet and MDA 60 feet, increase LPV visibility all Cats 1/8, LNAV/VNAV all Cats 1/4 and LNAV and Circling Cat C visibility 1/4 mile. For uncompensated Baro-VNAV systems, LNAV/VNAV NA below -15°C (5°F) or above 54°C (130°F). Helicopter visibility reduction below 1 SM NA. Night landing: Rwy 16 NA.

**MISSED APPROACH:** Climb to 2000 direct QUNKE and on track 193° to STRUT and hold.

AWOS-3PT <b>121.2</b>	LAKE CHARLES APP CON * <b>119.35 282.3</b>	UNICOM <b>122.8 (CTAF) 0</b>
--------------------------	---	---------------------------------



ELEV 83	TDZE 82
---------	---------



CATEGORY	A	B	C	D
LPV DA	365-1	283 (300-1)		NA
LNAV/VNAV DA	799-2 1/2	717 (800-2 1/2)		NA
LNAV MDA	700-1	618 (700-1)	700-1 3/4 618 (700-1 3/4)	NA
CIRCLING	700-1 617 (700-1)	740-1 657 (700-1)	740-1 3/4 657 (700-1 3/4)	NA

SC-4, 16 APR 2026 to 14 MAY 2026

SC-4, 16 APR 2026 to 14 MAY 2026