

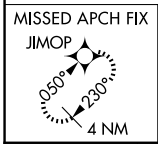
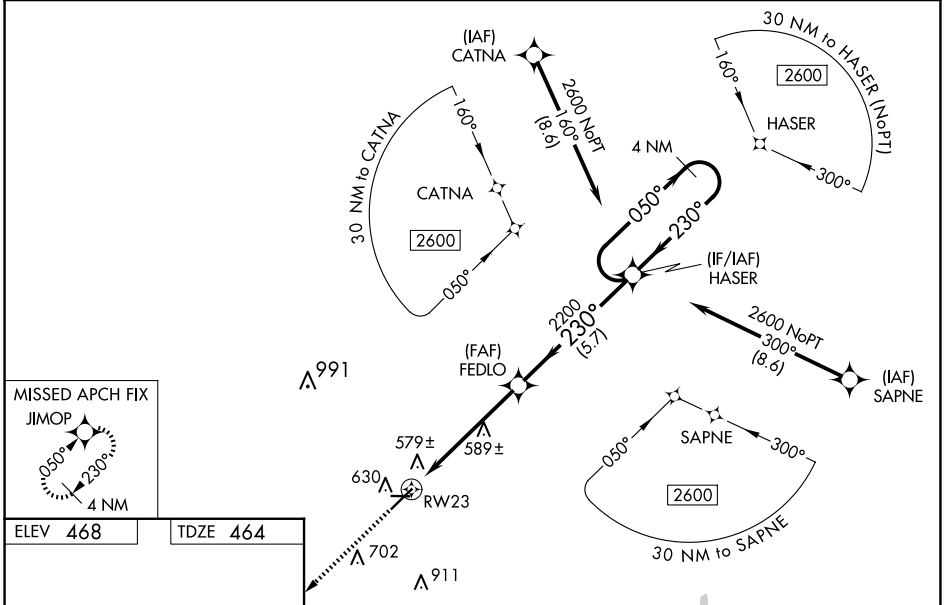
WAAS CH 70724 W23A	APP CRS 230°	Rwy Idg TDZE Apt Elev	6011 464 468
--	------------------------	-----------------------------	---

RNAV (GPS) RWY 23

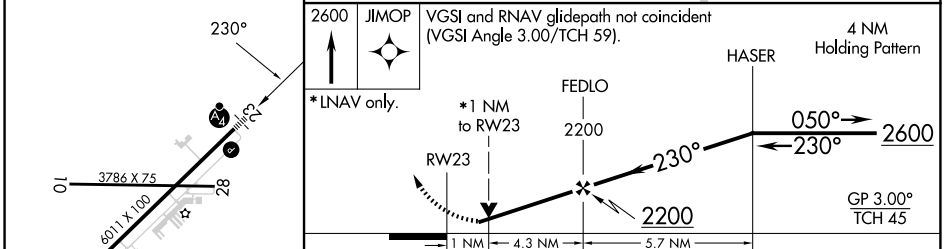
JIMMY CARTER RGNL (ACJ)

RNP APCH-GPS.		MALSF MISSED APPROACH: Climb to 2600 direct JIMOP and hold.
Baro-VNAV NA and VDP NA when using Columbus altimeter setting. For uncompensated Baro-VNAV systems, LNAV/VNAV NA below -15°C or above 41°C. For inop ALS when using Columbus altimeter setting, increase LPV and LNAV/VNAV all Cats visibility to 1 1/8 SM. RNAV Rwy 23 helicopter visibility reduction below 3/4 SM NA. When local altimeter setting not received, use Columbus altimeter setting and increase LPV DA to 876 feet and all visibilities 1/4 SM; increase LNAV/VNAV DA to 881 feet and all visibilities 1/4 SM; increase all MDAs 120 feet and LNAV visibility Cats C/D 3/8 SM, and Circling visibility Cat C 1/2 SM and Cat D 1/4 SM. For inop ALS, increase LPV and LNAV/VNAV all Cats visibility to 3/8 SM. Circling Rwy 10, 28 NA at night.		

AWOS-3 128.375	ATLANTA APP CON * 124.2 323.1	CLNC DEL 119.95	UNICOM 122.8 (CTAF) 0
--------------------------	---	---------------------------	---------------------------------



ELEV 468	TDZE 464
----------	----------



CATEGORY	A	B	C	D
LPV DA		760-3/4	296 (300-3/4)	
LNAV/VNAV DA		765-3/4	301 (300-3/4)	
LNAV MDA	840-3/4	376 (400-3/4)	840-3/4	376 (400-3/4)
CIRCLING	940-1	472 (500-1)	1020-1 1/2 552 (600-1 1/2)	1280-2 3/4 812 (900-2 3/4)

SE-4, 16 APR 2026 to 14 MAY 2026

SE-4, 16 APR 2026 to 14 MAY 2026