

VENICE, FLORIDA

AL-5960 (FAA)

26078

WAAS CH 53433 W23A	APP CRS 230°	Rwy Ldg 4377 TDZE 18 Apt Elev 18
--	------------------------	---

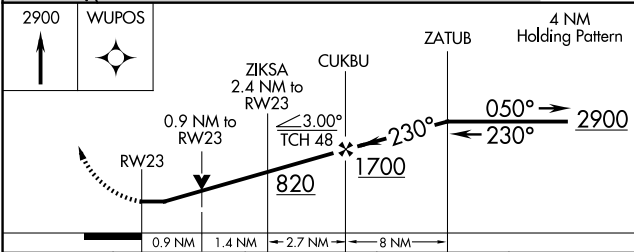
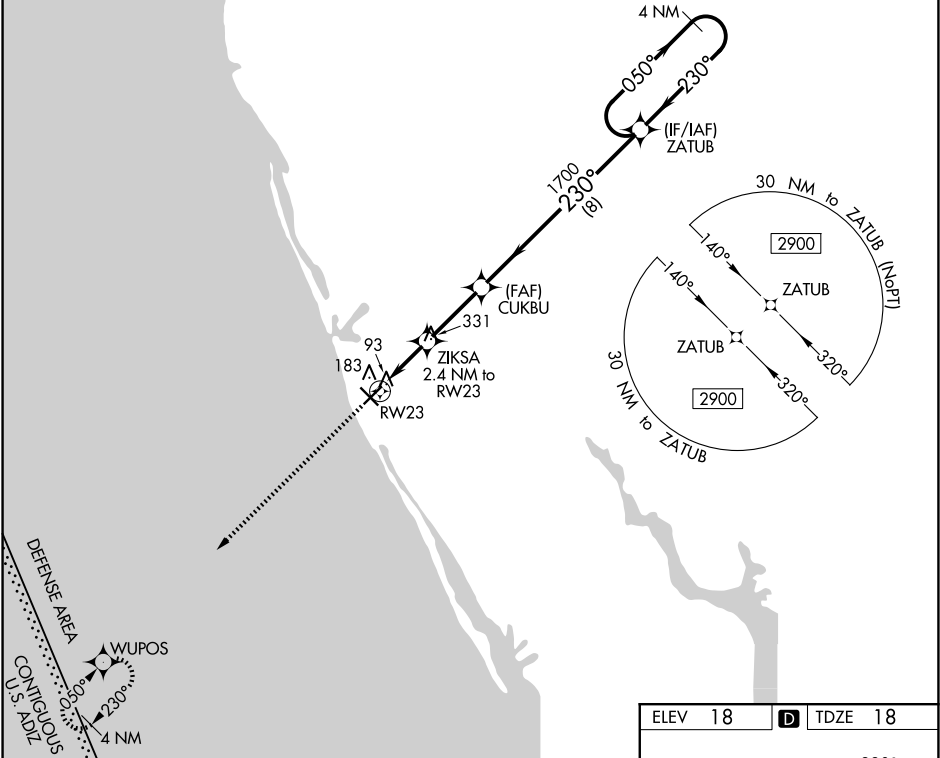
RNAV (GPS) RWY 23

VENICE MUNI (VNC)

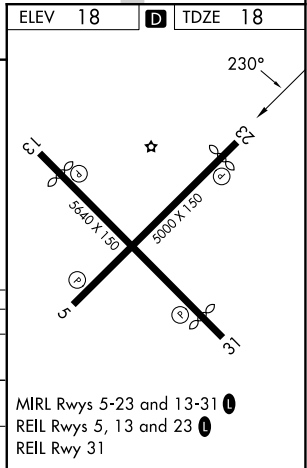
⚠ When local altimeter setting not received, use Sarasota altimeter setting and increase all MDA 60 feet and increase LP and LNAV Cats C, D visibility 1/8 mile, and Circling Cat C visibility 1/4 mile. DME/DME RNP-0.3 NA. VDP NA with Sarasota altimeter setting. Helicopter visibility reduction below 3/4 SM NA.

MISSED APPROACH:
Climb to 2900 direct WUPOS and hold.

AWOS-3 119.275	TAMPA APP CON 119.65 353.575	UNICOM 122.725 (CTAF) ①
--------------------------	--	-----------------------------------



CATEGORY	A	B	C	D
LP MDA	360-1 342 (400-1)			
LNAV MDA	440-1	422 (500-1)	440-1 1/4	422 (500-1 1/4)
CIRCLING	500-1	482 (500-1)	700-2 682 (700-2)	920-3 902 (1000-3)



SE-3, 16 APR 2026 to 14 MAY 2026

SE-3, 16 APR 2026 to 14 MAY 2026

VENICE, FLORIDA
Orig-B 16OCT14

27°04'N-82°26'W

RNAV (GPS) RWY 23

VENICE MUNI (VNC)