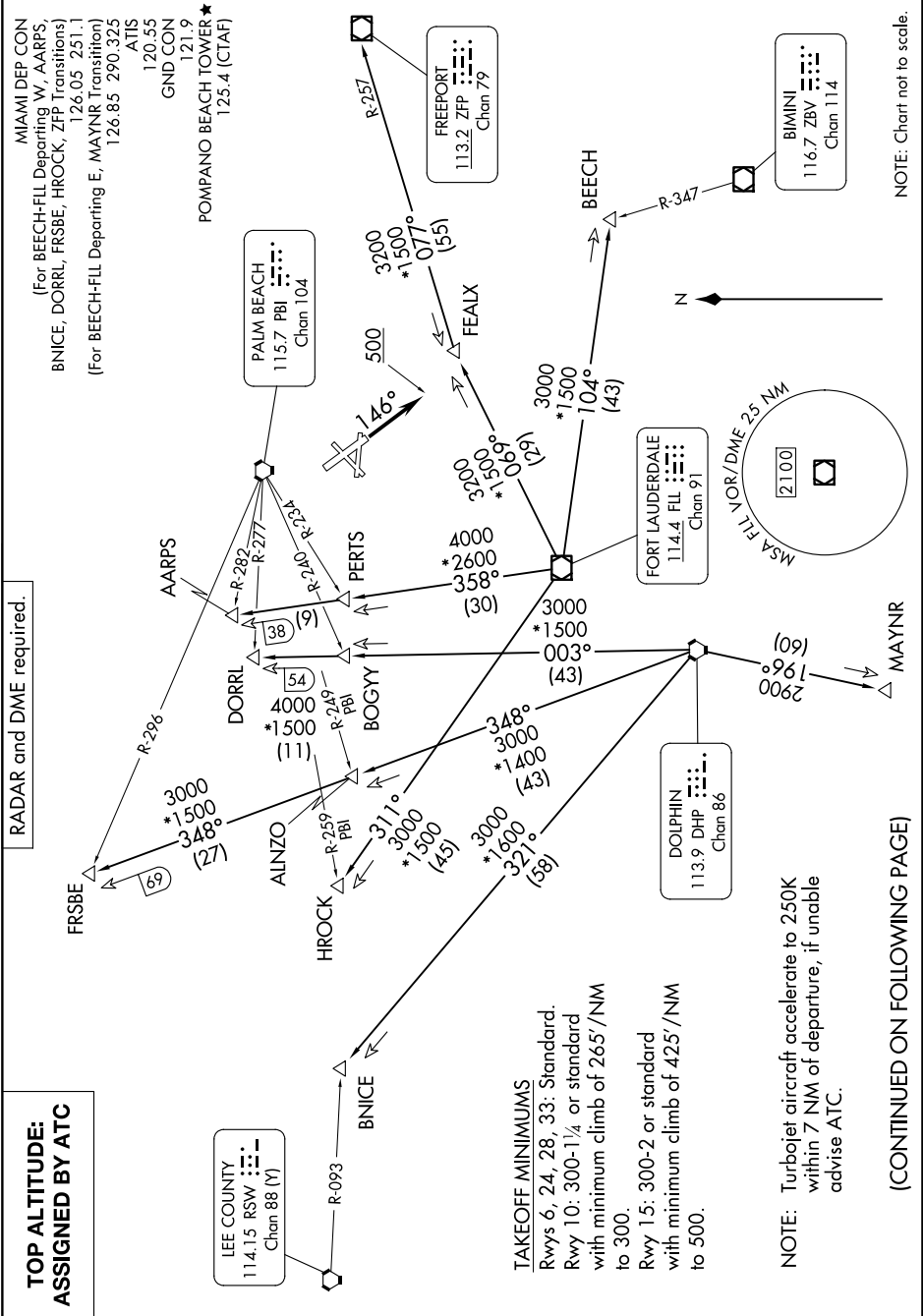


# FORT LAUDERDALE TWO DEPARTURE

SE-3, 16 APR 2026 to 14 MAY 2026



# FORT LAUDERDALE TWO DEPARTURE

NOTE: Chart not to scale.

(CONTINUED ON FOLLOWING PAGE)

SE-3, 16 APR 2026 to 14 MAY 2026

NOTE: Turbojet aircraft accelerate to 250K within 7 NM of departure, if unable advise ATC.

**TAKEOFF MINIMUMS**  
 Rwy 6, 24, 28, 33: Standard.  
 Rwy 10: 300-1¼ or standard with minimum climb of 265'/NM to 300.  
 Rwy 15: 300-2 or standard with minimum climb of 425'/NM to 500.

RADAR and DME required.

MIAMI DEP CON  
 (For BEECH-FLL Departing W, AARPS,  
 BNICE, DORRL, FRSE, HROCK, ZFP Transitions)  
 126.05 251.1  
 126.85 290.325  
 (For BEECH-FLL Departing E, MAYNR Transition)

AARPS  
 120.55  
 GND CON  
 121.9  
 POMPANO BEACH TOWER ★  
 125.4 (CTAF)

**TOP ALTITUDE:  
 ASSIGNED BY ATC**

LEE COUNTY  
 114.15 RSW, Chan 88 (V)

FORT LAUDERDALE  
 114.4 FLL, Chan 91

MSA FLL VOR/DME 25 NM  
 2100

DOLPHIN  
 113.9 DHP, Chan 86

PALM BEACH  
 115.7 PBI, Chan 104

FREEPORT  
 113.2 ZP, Chan 79

BIMINI  
 116.7 ZBV, Chan 114