

APP CRS	Rwy Ldg	<b>5000</b>
<b>033°</b>	TDZE	<b>75</b>
	Apt Elev	<b>75</b>

# RNAV (GPS) RWY 3

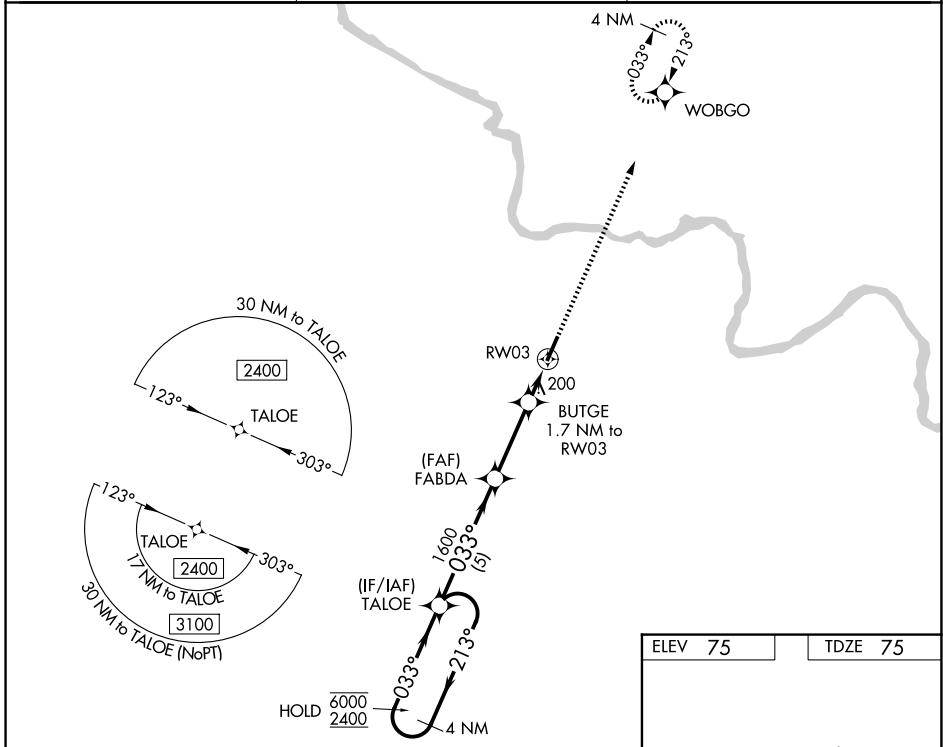
MARTIN COUNTY (MCZ)

RNP APCH - GPS.

⚠ Rwy 3 helicopter visibility reduction below 1 SM NA.  
 ⚠ Straight-in Rwy 3 NA at night, Circling Rwy 3 NA at night.

MISSED APPROACH: Climb to 3500 direct WOBGO and hold, continue climb-in-hold to 3500.

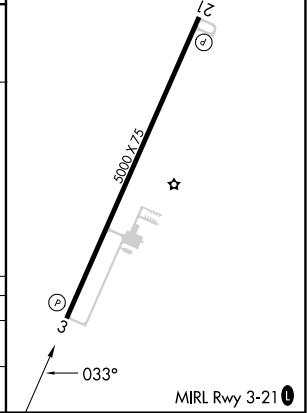
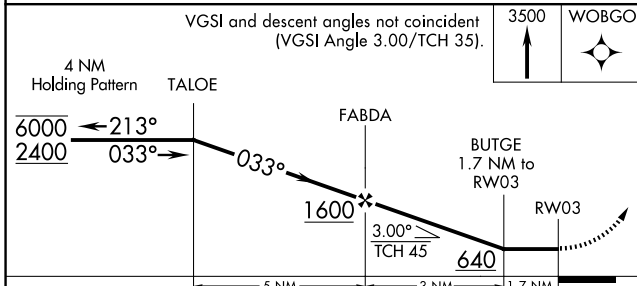
AWOS-3P <b>118.65</b>	WASHINGTON CENTER <b>123.85 279.65</b>	UNICOM <b>122.8 (CTAF) 0</b>
--------------------------	---	---------------------------------



SE-2, 16 APR 2026 to 14 MAY 2026

SE-2, 16 APR 2026 to 14 MAY 2026

ELEV 75	TDZE 75
---------	---------



CATEGORY	A	B	C	D
RNAV MDA	460-1	385 (400-1)	460-1½	385 (400-1½)
CIRCLING	500-1 425 (500-1)	540-1 465 (500-1)	680-1¾ 605 (700-1¾)	880-2½ 805 (900-2½)