

WAAS CH 87038 W19A	APP CRS 188°	Rwy Ldg TDZE Apt Elev	4346 685 685
--	------------------------	-----------------------------	---

RNAV (GPS) RWY 19

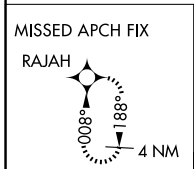
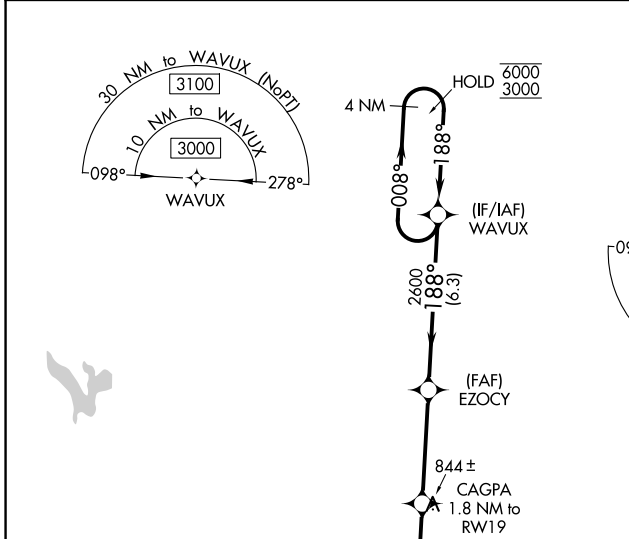
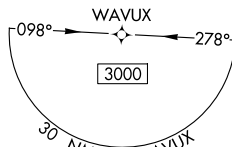
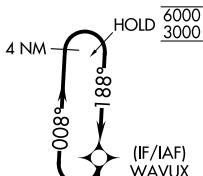
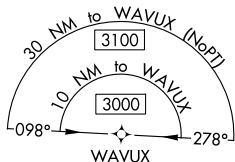
PICKAWAY COUNTY MEML (CYO)

RNP APCH.

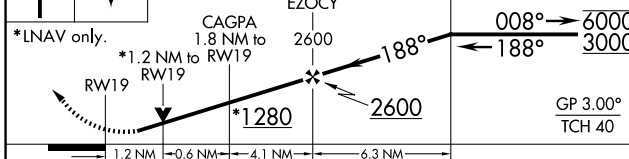
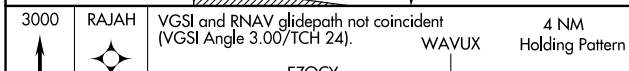
⚠ Baro-VNAV and VDP NA when using Rickenbacker Intl altimeter setting. For uncompensated Baro-VNAV systems, LNAV/VNAV NA below -16°C or above 54°C. Use Chillicothe altimeter setting, when not received use Rickenbacker Intl altimeter setting and increase LPV DA to 985 feet, LNAV/VNAV DA to 1150 feet, and all visibilities ¼ SM. Increase all MDAs 60 feet and Cats C and D visibility ¼ SM. Circling Rwy 1 NA at night. Rwy 19 helicopter visibility reduction below ¾ SM NA.

MISSED APPROACH:
Climb to 3000 direct RAJAH and hold.

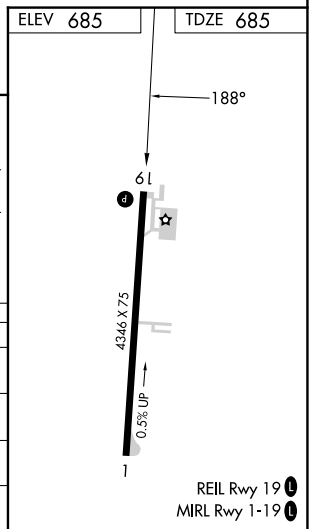
RZT AWOS-3 119.225	COLUMBUS APP CON 134.0 279.6	UNICOM 122.7 (CTAF) 0
------------------------------	--	---------------------------------



BUCKEYE MOA



CATEGORY	A	B	C	D
LPV DA		935-7/8	250 (300-7/8)	
LNAV/VNAV DA		1100-13/8	415 (500-13/8)	
LNAV MDA	1100-1	415 (500-1)	1100-13/8	415 (500-13/8)
CIRCLING	1180-1 495 (500-1)	1200-1 515 (600-1)	1300-13/4 615 (700-13/4)	1340-2 655 (700-2)



REIL Rwy 19 0
MIRL Rwy 1-19 0

EC-2, 16 APR 2026 to 14 MAY 2026

EC-2, 16 APR 2026 to 14 MAY 2026