

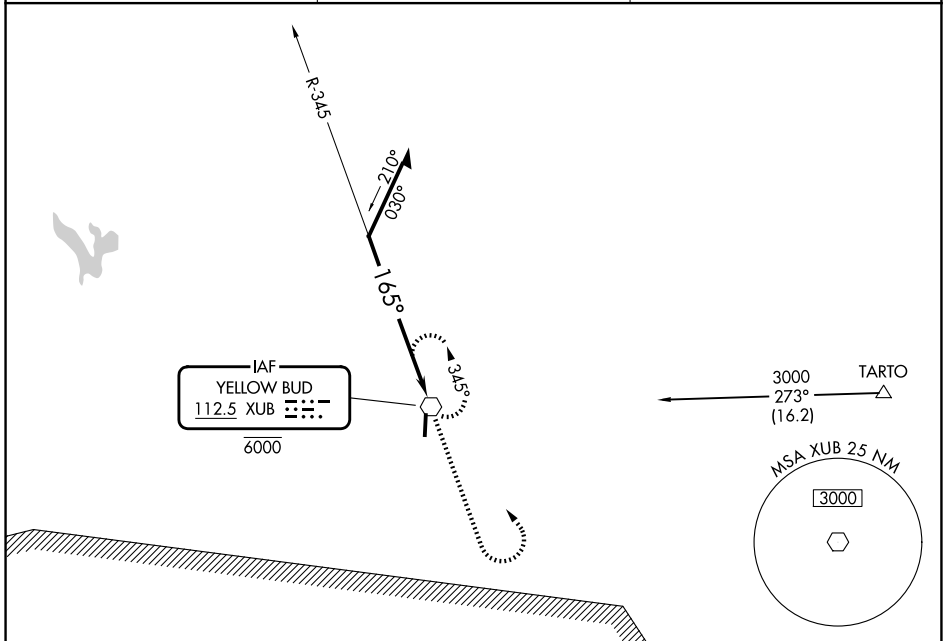
VOR XUB <b>112.5</b>	APP CRS <b>165°</b>	Rwy Ldg <b>4346</b> TDZE <b>685</b> Apt Elev <b>685</b>
-------------------------	------------------------	--

**VOR RWY 19**  
PICKAWAY COUNTY MEML (CYO)

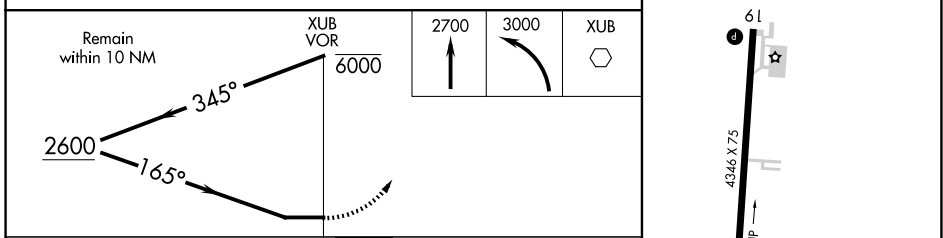
**⚠** Use Chillicothe altimeter setting, when not received use Rickenbacker Intl altimeter setting and increase all MDAs 60 feet and Cats C and D visibility ¼ SM. Circling Rwy 1 NA at night. Rwy 19 helicopter visibility reduction below ¾ SM NA.

MISSED APPROACH: Climb to 2700 then climbing left turn to 3000 direct XUB VOR and hold.

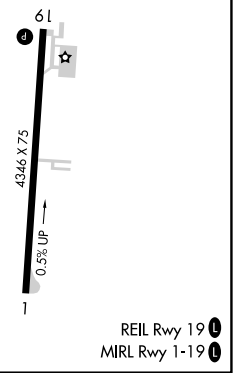
RZT AWOS-3 <b>119.225</b>	COLUMBUS APP CON <b>134.0 279.6</b>	UNICOM <b>122.7 (CTAF) 0</b>
------------------------------	--	---------------------------------



ELEV 685	TDZE 685
----------	----------



CATEGORY	A	B	C	D
S-19	1320-1	635 (700-1)	1320-1¾	635 (700-1¾)
CIRCLING	1320-1	635 (700-1)	1320-1¾	1340-2 655 (700-2)



REIL Rwy 19 0  
MIRL Rwy 1-19 0

EC-2, 16 APR 2026 to 14 MAY 2026

EC-2, 16 APR 2026 to 14 MAY 2026