

GARLAND SIX DEPARTURE

SC-2, 16 APR 2026 to 14 MAY 2026

LONE STAR DEP CON
135.975 379.9
CTAF
122.8

**TOP ALTITUDE:
ASSIGNED BY ATC**

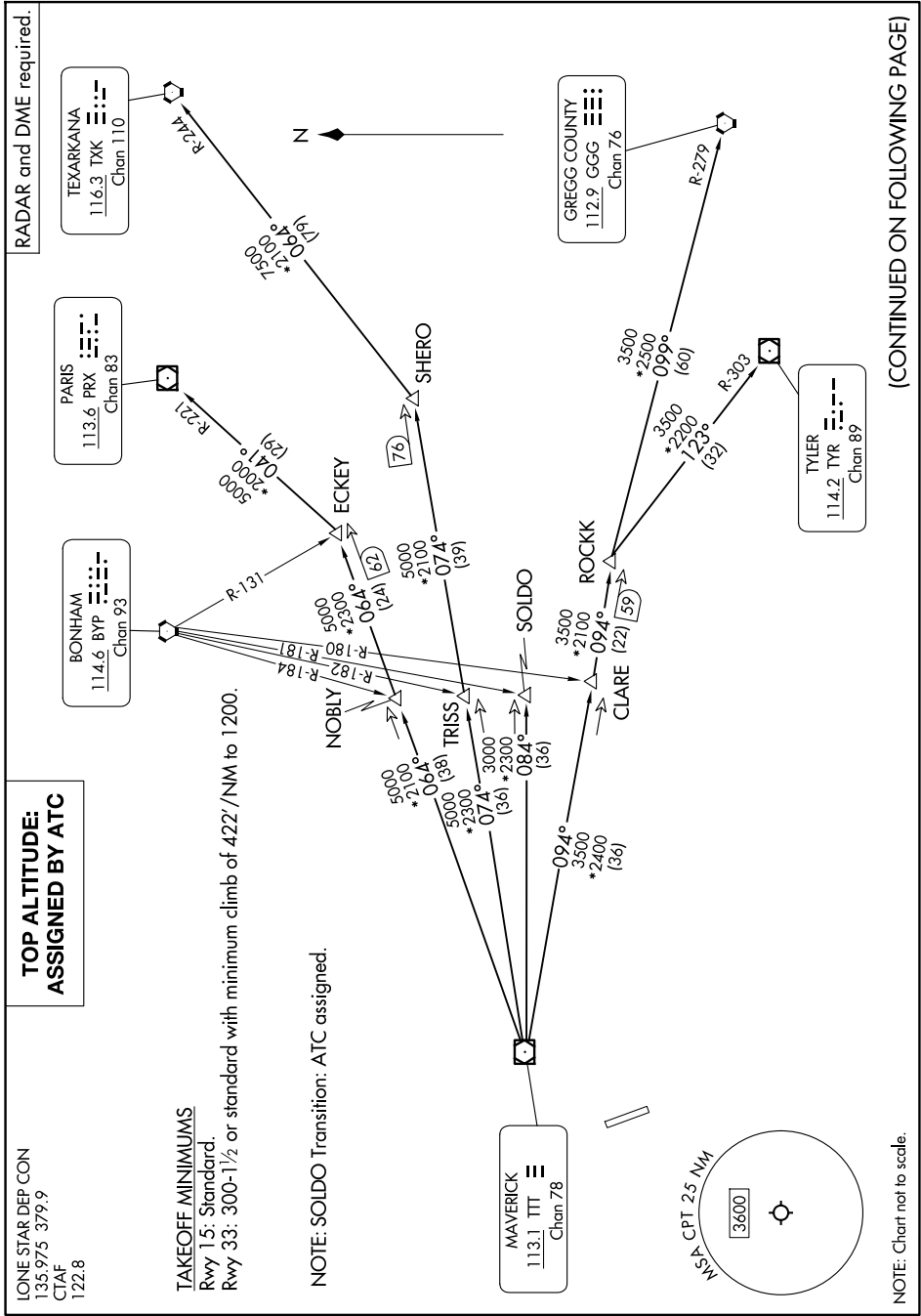
RADAR and DME required.

TAKEOFF MINIMUMS

Rwy 15: Standard.

Rwy 33: 300-1½ or standard with minimum climb of 422'/NM to 1200.

NOTE: SOLDO Transition: ATC assigned.



(CONTINUED ON FOLLOWING PAGE)

SC-2, 16 APR 2026 to 14 MAY 2026

NOTE: Chart not to scale.