

KUSSO TWO DEPARTURE (RNAV)

CLEBURNE, TEXAS

SC-2, 16 APR 2026 to 14 MAY 2026

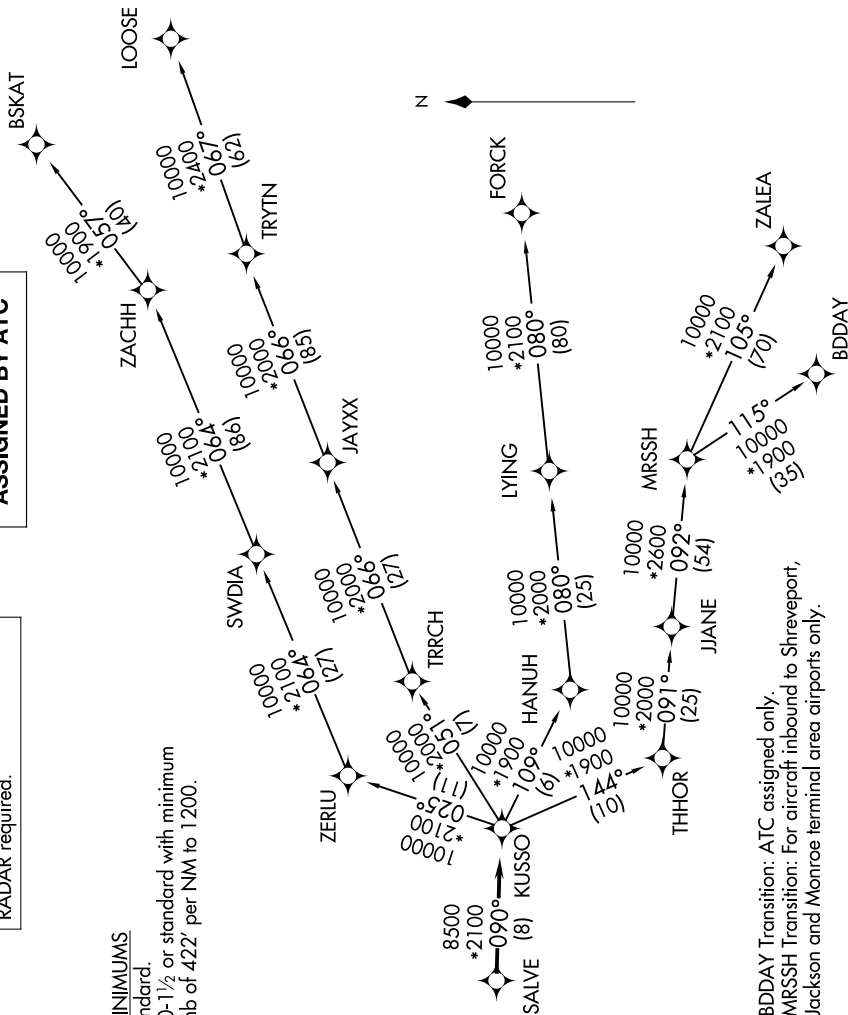
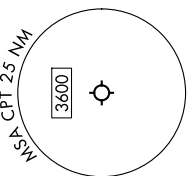
LONE STAR DEP CON
135.975 379.9
CTAF
122.8

RNAV 1 - DME/DME/IRU or GPS.
RADAR required.

**TOP ALTITUDE:
ASSIGNED BY ATC**

TAKEOFF MINIMUMS

Rwy 15: Standard.
Rwy 33: 300-1½ or standard with minimum
climb of 422' per NM to 1200.



NOTE: BDDAY Transition: ATC assigned only.
MRSSH Transition: For aircraft inbound to Shreveport,
Jackson and Monroe terminal area airports only.

(CONTINUED ON FOLLOWING PAGE)

NOTE: Chart not to scale.

SC-2, 16 APR 2026 to 14 MAY 2026

KUSSO TWO DEPARTURE (RNAV)