

LOC I-CPT <b>111.15</b> Chan 48(Y)	APP CRS <b>153°</b>	Rwy Ldg TDZE Apt Elev	<b>5512</b> <b>854</b> <b>854</b>
--	------------------------	-----------------------------	---

# LOC RWY 15

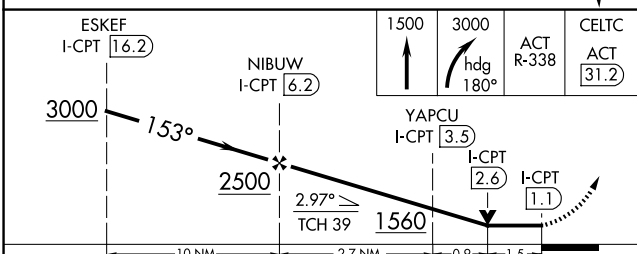
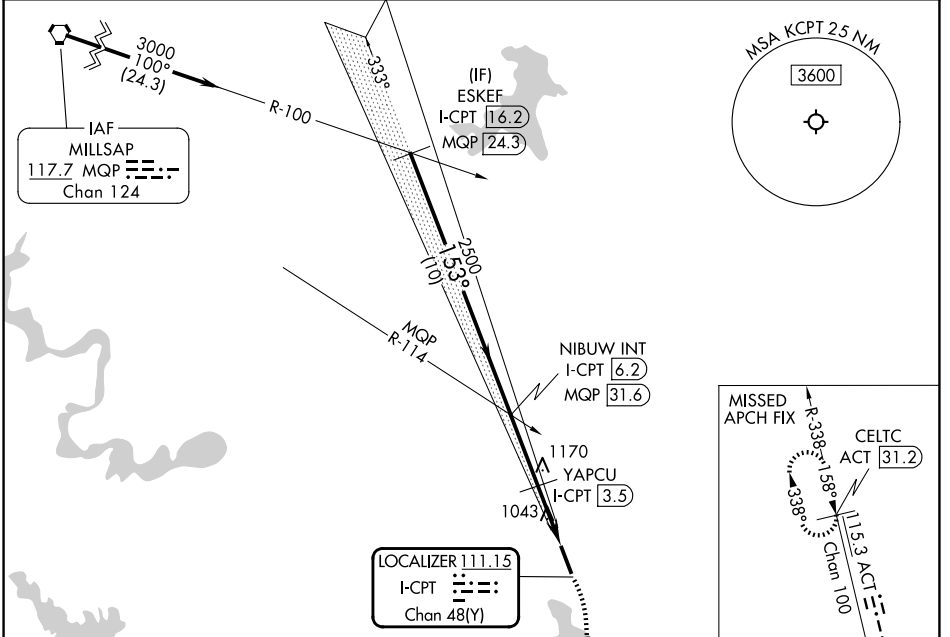
CLEBURNE RGNL (CPT)

DME required.

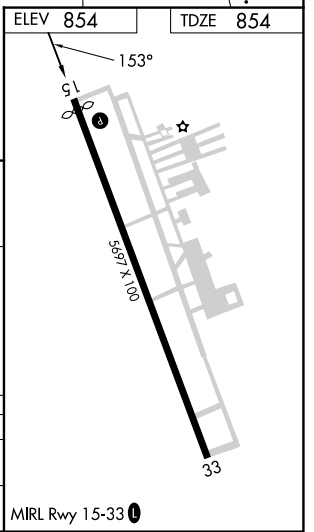
⚠ NA Rwy 15 helicopter visibility reduction below 3/4 SM NA.

MISSED APPROACH: Climb to 1500 then climbing right turn to 3000 on heading 180° and ACT VORTAC R-338 to CELTC/ACT 31.2 DME.

AWOS-3 <b>119.525</b>	LONE STAR APP CON <b>135.975 379.9</b>	UNICOM <b>122.8 (CTAF) 0</b>
--------------------------	---	---------------------------------



	ESKEF I-CPT 16.2		NIBUW I-CPT 6.2		1500	3000	ACT R-338	CELTC ACT 31.2
	3000		2500		YAPCU I-CPT 3.5		I-CPT 2.6	I-CPT 1.1
	TCH 39		1560					
CATEGORY	A	B	C	D				
S-15	1360-1	506 (600-1)	1360-1 3/8	506 (600-1 3/8)				
CIRCLING	1400-1	546 (600-1)	1680-2 1/2	1700-2 3/4				
			826 (900-2 1/2)	846 (900-2 3/4)				



SC-2, 16 APR 2026 to 14 MAY 2026

SC-2, 16 APR 2026 to 14 MAY 2026