

APP CRS	Rwy Idg	<b>5000</b>
<b>301°</b>	TDZE	<b>1070</b>
	Apt Elev	<b>1086</b>

# RNAV (GPS) RWY 30

MONROE MUNI (E.F.T)

RNP APCH-GPS.

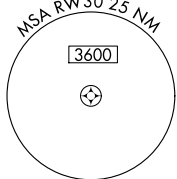
**⚠** When local altimeter setting not received, use Altimeter setting and increase all MDA 100 feet, increase LNAV Cat C/D and Circling Cat C visibility ¼ mile.  
**⚠** VDP NA when using Altimeter setting. Rwy 30 helicopter visibility reduction below ¾ SM NA. Circling to Rwy 2-20 NA at night.

**MISSED APPROACH:**  
 Climbing left turn to 3000  
 direct DAVIS and hold.

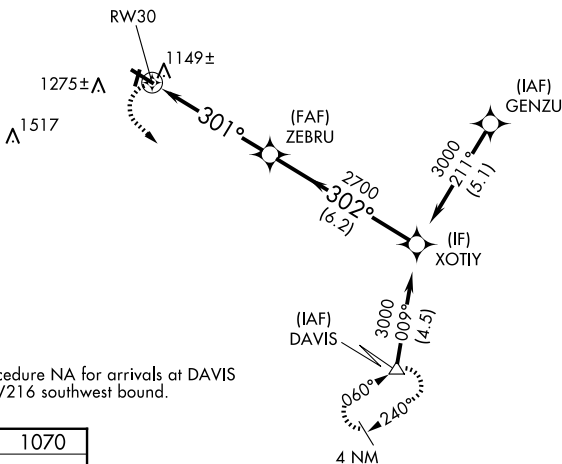
AWOS-3  
**118.375**

ROCKFORD APP CON  
**126.0 327.0**

UNICOM  
**123.05 (CTAF) 0**



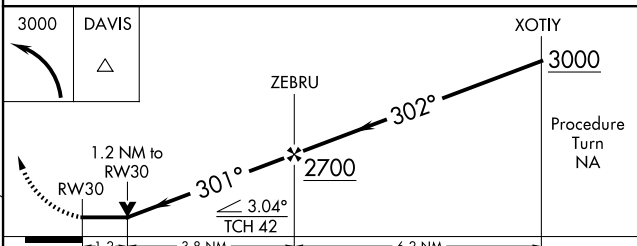
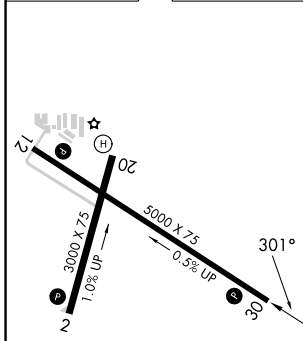
2049 **⚠**



EC-3, 16 APR 2026 to 14 MAY 2026

EC-3, 16 APR 2026 to 14 MAY 2026

ELEV 1086	TDZE 1070
-----------	-----------



CATEGORY	A	B	C	D
LNAV MDA	1480-1	410 (400-1)	1480-1¼	410 (400-1¼)
CIRCLING	1540-1 454 (500-1)	1640-1 554 (600-1)	1640-1½ 554 (600-1½)	1640-2 554 (600-2)

MONROE, WISCONSIN  
 Orig-B 20MAY21

42°37'N-89°35'W

MONROE MUNI (E.F.T)  
**RNAV (GPS) RWY 30**