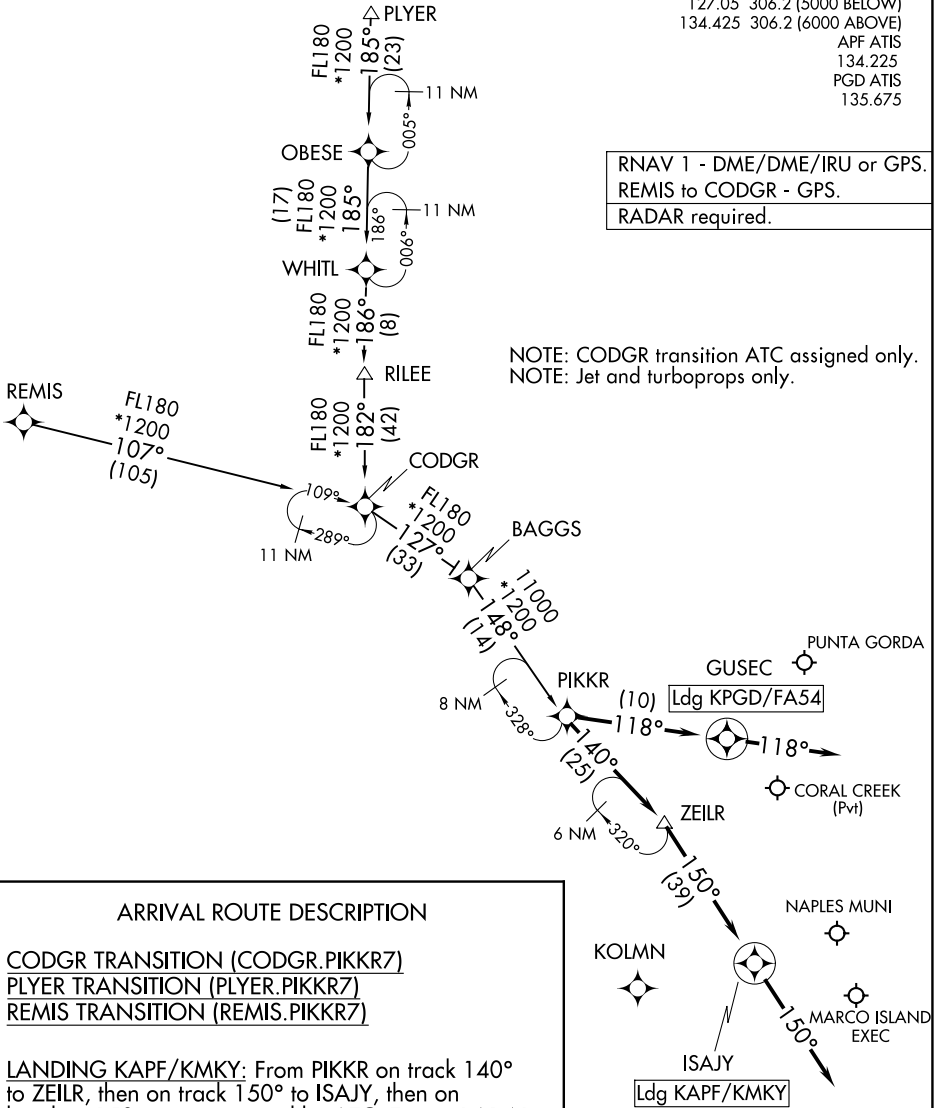


FORT MYERS APP CON ★  
 127.05 306.2 (5000 BELOW)  
 134.425 306.2 (6000 ABOVE)  
 APF ATIS 134.225  
 PGD ATIS 135.675

RNAV 1 - DME/DME/IRU or GPS.  
 REMIS to CODGR - GPS.  
 RADAR required.

NOTE: CODGR transition ATC assigned only.  
 NOTE: Jet and turboprops only.



SE-3, 16 APR 2026 to 14 MAY 2026

SE-3, 16 APR 2026 to 14 MAY 2026

ARRIVAL ROUTE DESCRIPTION

CODGR TRANSITION (CODGR.PIKKR7)  
PLYER TRANSITION (PLYER.PIKKR7)  
REMIS TRANSITION (REMIS.PIKKR7)

LANDING KAPF/KMKY: From PIKKR on track 140° to ZEILR, then on track 150° to ISAJY, then on heading 150° or as assigned by ATC. Expect RADAR vectors to final approach course.

LANDING KPGD/FA54: From PIKKR on track 118° to GUSEC, then on heading 118° or as assigned by ATC. Expect RADAR vectors to final approach course.

NOTE: Chart not to scale.