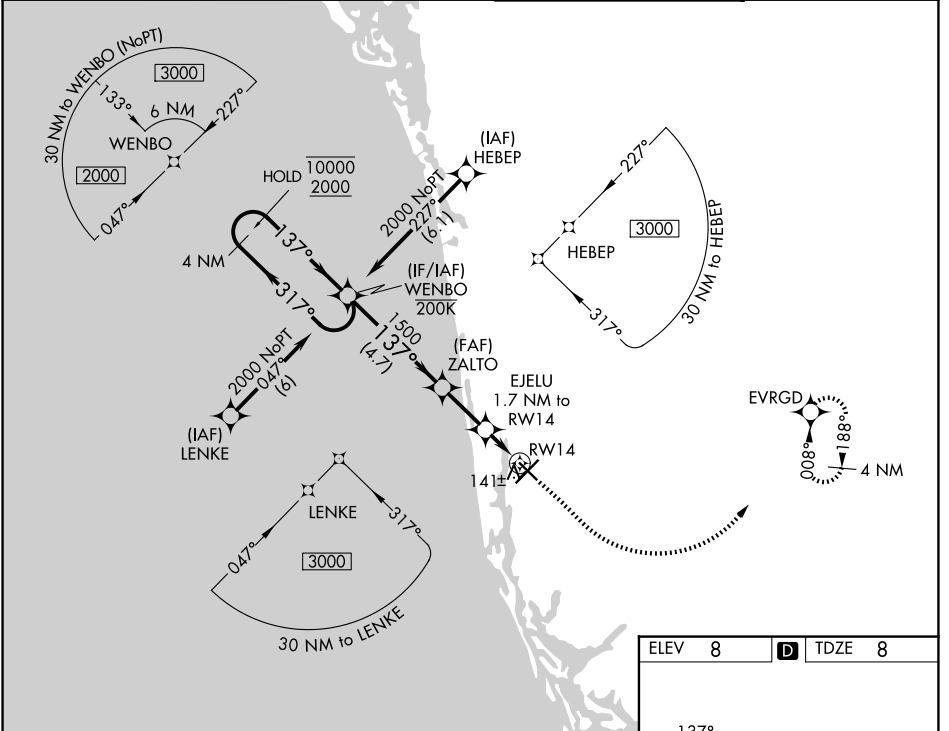


WAAS CH <b>89988</b> W14A	APP CRS <b>137°</b>	Rwy Ldg TDZE Apt Elev	<b>4422</b> <b>8</b> <b>8</b>
---------------------------------	------------------------	-----------------------------	-------------------------------------

# RNAV (GPS) RWY 14

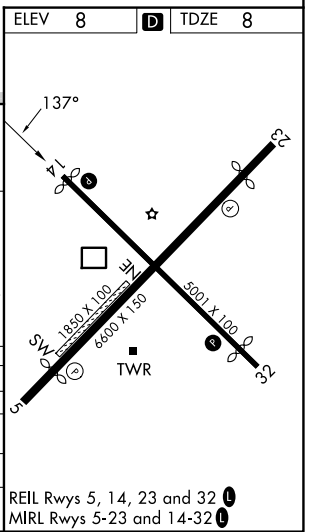
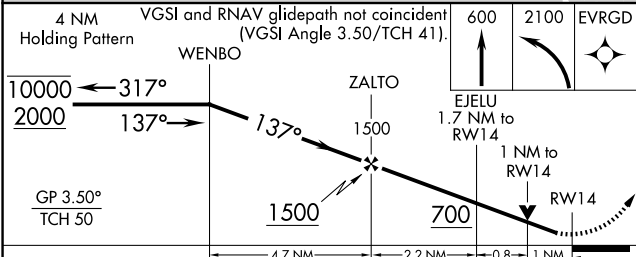
NAPLES MUNI (APF)

RNP APCH - GPS.		MISSED APPROACH: Climb to 600 then climbing left turn to 2100 direct EVRGRD and hold.	
<p>⚠ For uncompensated Baro-VNAV systems, LNAV/VNAV NA below 6°C or above 48°C. Rwy 14 helicopter visibility reduction below ¾ SM NA.</p>	<p>ATIS <b>134.225</b></p>	<p>FORT MYERS APP CON★ <b>119.75 371.85 (W)</b> <b>124.125 371.85 (E)</b></p>	<p>NAPLES TOWER★ <b>128.5 (CTAF) 0</b></p>
			<p>GND CON <b>121.6</b></p>



SE-3, 16 APR 2026 to 14 MAY 2026

SE-3, 16 APR 2026 to 14 MAY 2026



CATEGORY	A	B	C	D
LPV DA		344-1	336 (400-1)	
LNAV/VNAV DA		400-1½	392 (400-1½)	
LNAV MDA	400-1	392 (400-1)	400-1½	392 (400-1½)
CIRCLING	500-1	492 (500-1)	620-1¾ 612 (700-1¾)	760-2½ 752 (800-2½)