

WAAS CH <b>46487</b> <b>W32A</b>	APP CRS <b>317°</b>	Rwy Ldg TDZE Apt Elev	<b>4422</b> <b>8</b> <b>8</b>
--	------------------------	-----------------------------	-------------------------------------

# RNAV (GPS) RWY 32

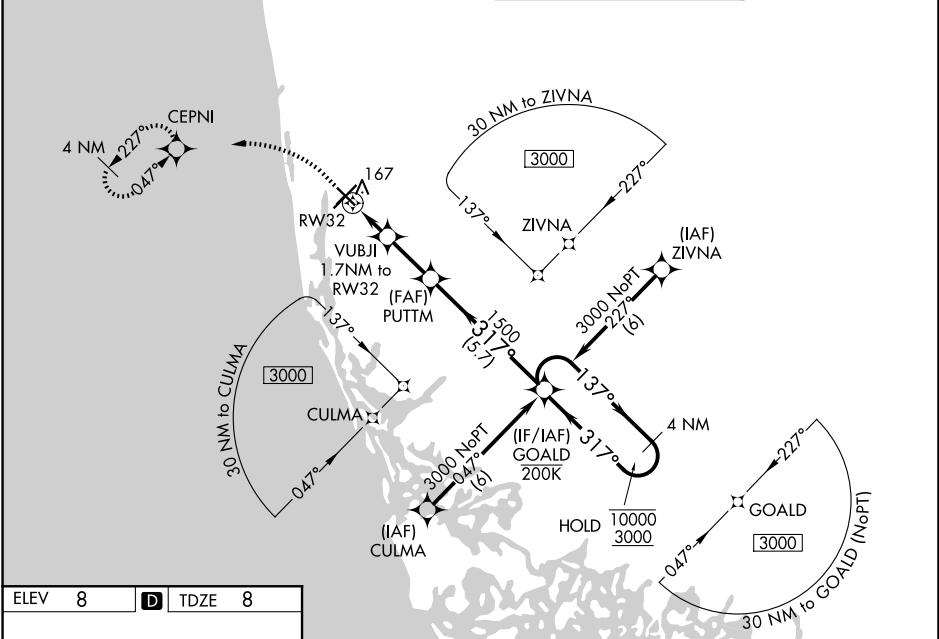
NAPLES MUNI (APF)

RNP APCH - GPS.

**▼** For uncompensated Baro-VNAV systems, LNAV/VNAV NA below 6°C or above 49°C. Rwy 32 helicopter visibility reduction below 3/4 SM NA.

**MISSED APPROACH:** Climb to 500 then climbing left turn to 2000 direct CEPNI and hold. Continue climb-in-hold to 2000.

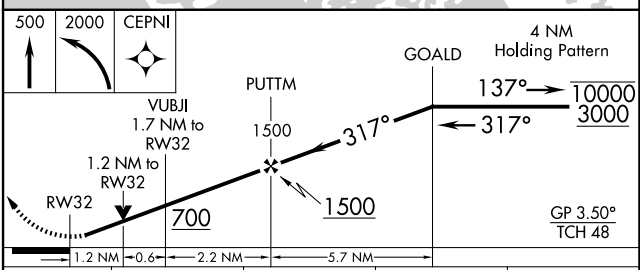
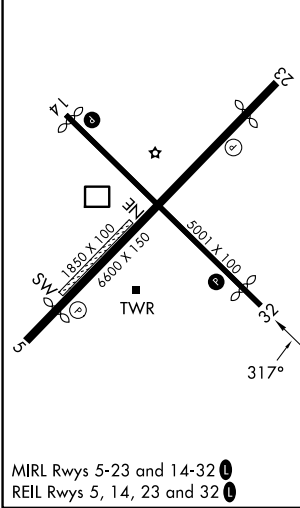
ATIS <b>134.225</b>	FORT MYERS APP CON★ <b>119.75 371.85 (W)</b> <b>124.125 371.85 (E)</b>	NAPLES TOWER ★ <b>128.5 (CTAF) 0</b>	GND CON <b>121.6</b>
------------------------	--	---	-------------------------



SE-3, 16 APR 2026 to 14 MAY 2026

SE-3, 16 APR 2026 to 14 MAY 2026

ELEV 8	<b>D</b>	TDZE 8
--------	----------	--------



CATEGORY	A	B	C	D
LPV DA		294-1	286 (300-1)	
LNAV/VNAV DA		357-1	349 (400-1)	
LNAV MDA	420-1	412 (500-1)	420-1 1/8	412 (500-1 1/8)
CIRCLING	500-1	492 (500-1)	620-1 3/4 612 (700-1 3/4)	760-2 1/2 752 (800-2 1/2)