

NAPLES, FLORIDA

AL-6020 (FAA-O)

25275

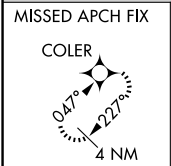
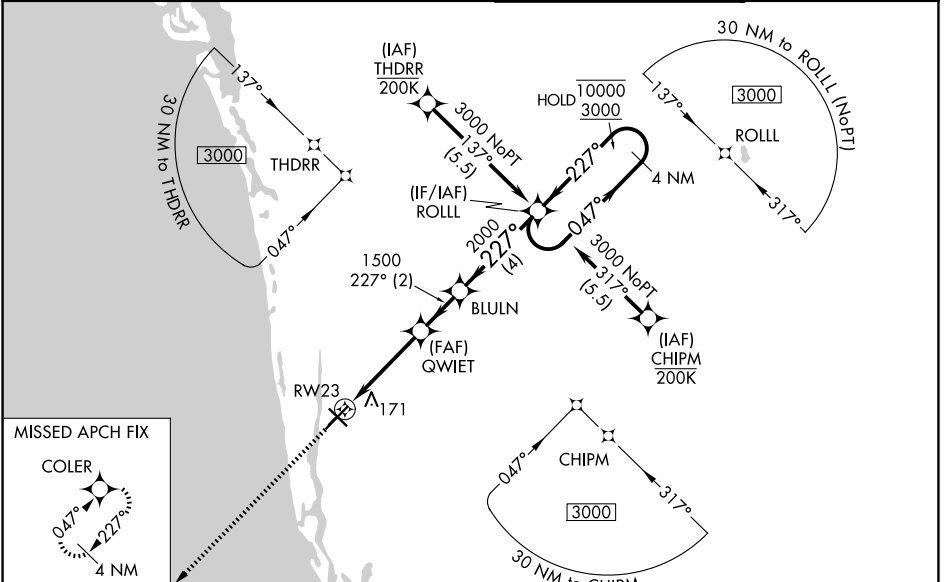
WAAS CH <b>83521</b> <b>W23B</b>	APP CRS <b>227°</b>	Rwy Ldg TDZE Apt Elev	<b>5000</b> <b>8</b> <b>8</b>
--	------------------------	-----------------------------	-------------------------------------

# RNAV (GPS) Y RWY 23

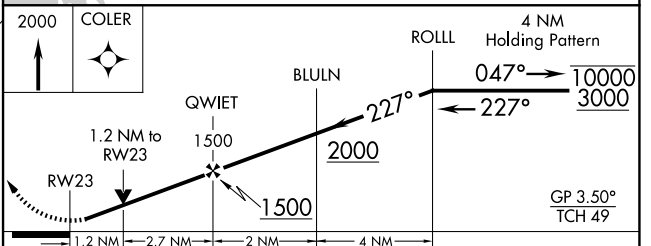
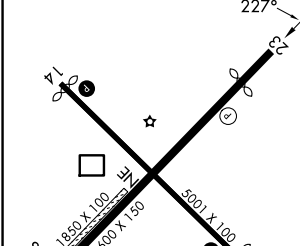
NAPLES MUNI (APF)

RNP APCH - GPS.		MISSED APPROACH: Climb to 2000 direct COLER and hold.
<p>⚠ For uncompensated Baro-VNAV systems, LNAV/VNAV NA below 6°C or above 48°C. Rwy 23 helicopter visibility reduction below ¾ SM NA.</p>		

ATIS <b>134.225</b>	FORT MYERS APP CON★ <b>119.75 371.85 (W)</b> <b>124.125 371.85 (E)</b>	NAPLES TOWER★ <b>128.5 (CTAF) 0</b>	GND CON <b>121.6</b>
------------------------	--	--	-------------------------



ELEV 8	<b>D</b>	TDZE 8
--------	----------	--------



CATEGORY	A	B	C	D
LPV DA		278-1	270 (300-1)	
LNAV/VNAV DA		332-1	324 (400-1)	
LNAV MDA	440-1	432 (500-1)	440-1¼	432 (500-1¼)
CIRCLING	500-1	492 (500-1)	620-1¾ 612 (700-1¾)	760-2½ 752 (600-2½)

NAPLES, FLORIDA  
Orig 02OCT25

26°09'N-81°47'W

# RNAV (GPS) Y RWY 23

SE-3, 16 APR 2026 to 14 MAY 2026

SE-3, 16 APR 2026 to 14 MAY 2026