

(TRUCK5.TRUCK) 24025

TRUCK FIVE DEPARTURE (OBSTACLE)

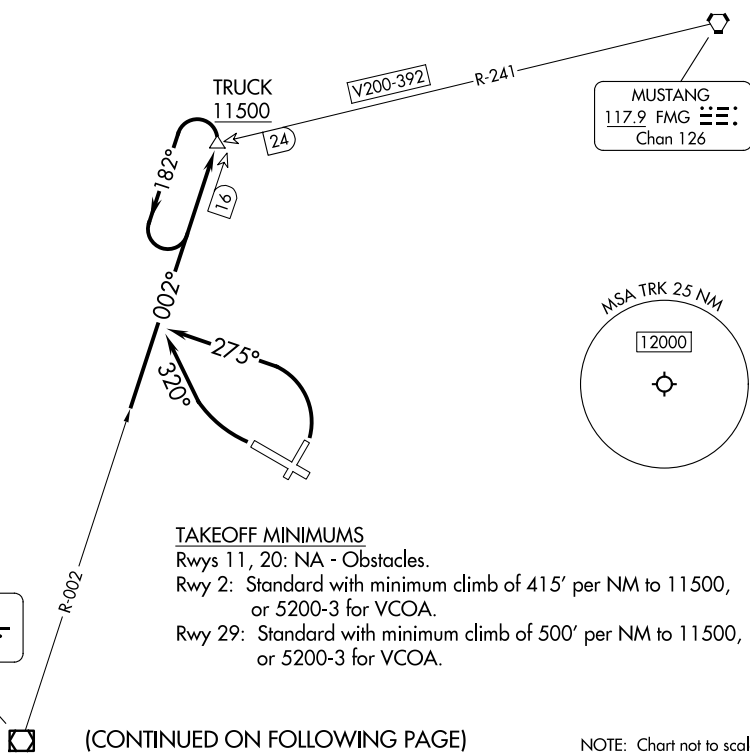
AL-6021 (FAA)

TRUCKEE-TAHOE (TRK)
TRUCKEE, CALIFORNIA

OAKLAND CENTER
127.95 316.1
D-ATIS
118.0
TRUCKEE TOWER *
120.575
UNICOM
122.95

MUSTANG
117.9 FMG
Chan 126

PALISADES
113.2 SWR
Chan 79



TAKEOFF MINIMUMS

Rwys 11, 20: NA - Obstacles.

Rwy 2: Standard with minimum climb of 415' per NM to 11500, or 5200-3 for VCOA.

Rwy 29: Standard with minimum climb of 500' per NM to 11500, or 5200-3 for VCOA.

(CONTINUED ON FOLLOWING PAGE)

NOTE: Chart not to scale.

DEPARTURE ROUTE DESCRIPTION

TAKEOFF RUNWAY 2: Climbing left turn to 11500 on heading 275° and SWR R-002 to TRUCK INT, thence. . . . , or for climb in visual conditions cross Truckee-Tahoe Airport heading 290° at or above 9100, then proceed on SWR R-002 to TRUCK INT. When executing VCOA, notify ATC prior to departure. Thence. . . .

TAKEOFF RUNWAY 29: Climbing right turn to 11500 on heading 320° and SWR VOR/DME R-002 to TRUCK INT, thence. . . . , or for climb in visual conditions cross Truckee-Tahoe Airport heading 290° at or above 9100, then proceed on SWR R-002 to TRUCK INT. When executing VCOA, notify ATC prior to departure. thence. . . .

. . . .continue climb in TRUCK INT holding pattern to cross TRUCK INT at or above 11500 before proceeding on course.

VCOA RUNWAYS 2, 29: Obtain ATC approval for VCOA when requesting IFR clearance. Climb in visual conditions to cross Truckee-Tahoe Airport heading 290° at or above 9100, then proceed on SWR VOR/DME R-002 to TRUCK INT, thence. . . .

. . . .continue climb in TRUCK INT holding pattern to cross TRUCK INT at or above 11500 before proceeding on course.

TRUCK FIVE DEPARTURE (OBSTACLE)

(TRUCK5.TRUCK) 29DEC22

TRUCKEE, CALIFORNIA
TRUCKEE-TAHOE (TRK)

SW-2, 16 APR 2026 to 14 MAY 2026

SW-2, 16 APR 2026 to 14 MAY 2026