

(SEEVR.BRDJE5) 24305

BRDJE FIVE ARRIVAL (RNAV)

AL-6039 (FAA)

Arrival Route

DALLAS-FORT WORTH INTL (DFW)

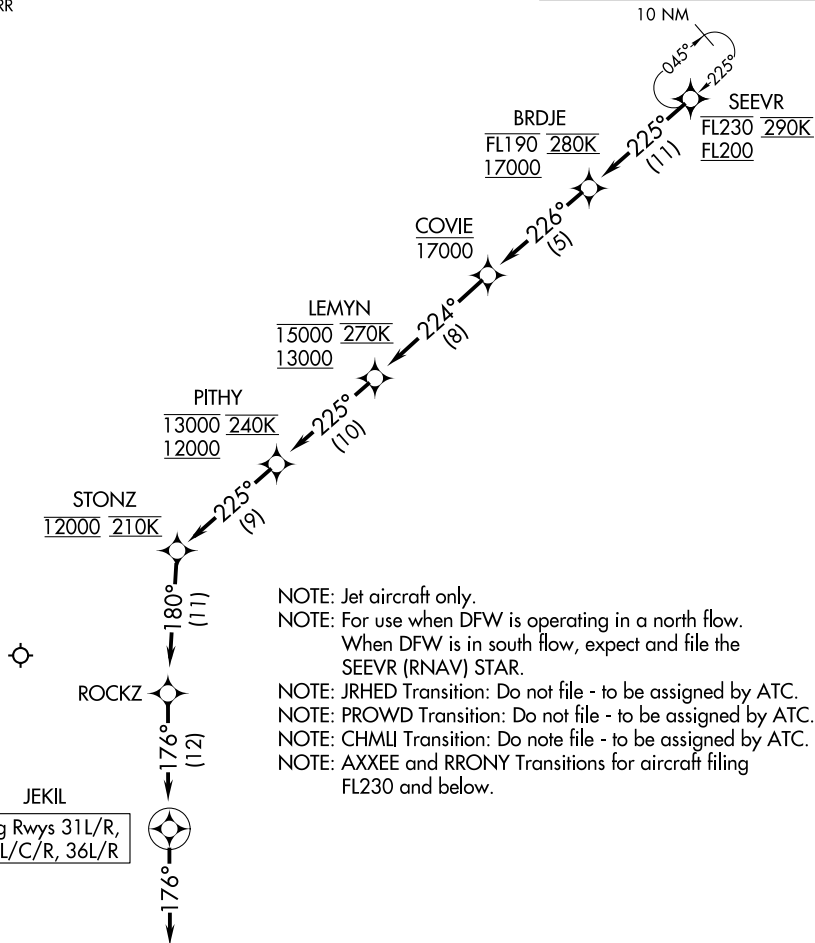
DALLAS-FORT WORTH, TEXAS

LONE STAR APP CON
125.025 263.025
D-ATIS ARR
123.775

RNAV 1 - DME/DME/IRU or GPS.

RADAR required.

10 NM



NOTE: Jet aircraft only.
 NOTE: For use when DFW is operating in a north flow.
 When DFW is in south flow, expect and file the SEEVR (RNAV) STAR.
 NOTE: JRHED Transition: Do not file - to be assigned by ATC.
 NOTE: PROWD Transition: Do not file - to be assigned by ATC.
 NOTE: CHMLI Transition: Do not file - to be assigned by ATC.
 NOTE: AXEE and RRONY Transitions for aircraft filing FL230 and below.

NOTE: Chart not to scale.

ARRIVAL ROUTE DESCRIPTION

From SEEVR on track 225° to cross BRDJE between 17000 and FL190 and at 280K, then on track 226° to cross COVIE at or below 17000, then on track 224° to cross LEMYN between 13000 and 15000 and at 270K, then on track 225° to cross PITHY between 12000 and 13000 and at 240K, then on track 225° to cross STONZ at 12000 and at 210K, then on track 180° to ROCKZ, then on track 176° to JEKIL, then on track 176°. Expect RADAR vectors to final approach course.

BRDJE FIVE ARRIVAL (RNAV)

Arrival Route

DALLAS-FORT WORTH, TEXAS

DALLAS-FORT WORTH INTL (DFW)

(SEEVR.BRDJE5) 11JUL24

SC-2, 16 APR 2026 to 14 MAY 2026

SC-2, 16 APR 2026 to 14 MAY 2026