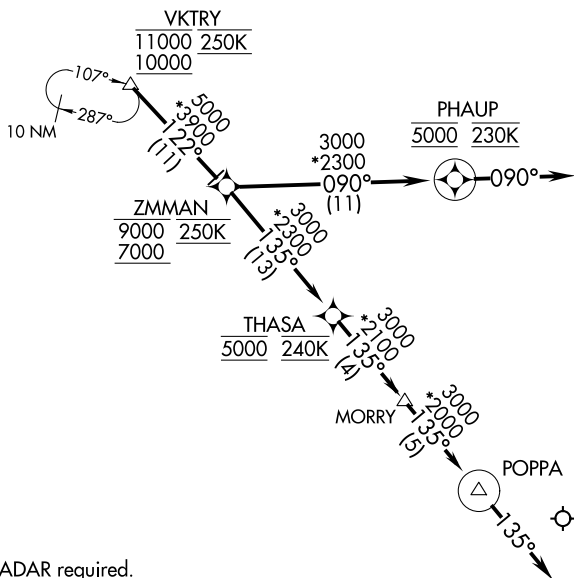


# VKTRY TWO ARRIVAL (RNAV) Arrival Routes

LONE STAR APP CON  
119.875 284.65  
D-ATIS ARR  
123.775



- NOTE: RADAR required.
- NOTE: RNAV 1.
- NOTE: DME/DME/IRU or GPS required.
- NOTE: Turbojet aircraft only.
- NOTE: Aircraft should expect ILS or LOC RWY 18R.
- NOTE: For use when DFW is operating in a south flow.  
When DFW is operating in a north flow, file and expect the JOVEM RNAV STAR.

NOTE: Chart not to scale.

## ARRIVAL ROUTE DESCRIPTION

From VKTRY on track 122° to cross ZMMAN between 7000 and 9000 and at 250K.

LANDING RUNWAY 13R: From ZMMAN on track 135° to cross THASA at 5000 and at 240K, then on track 135° to MORRY, then on track 135° to POPPA, then on track 135°. Expect RADAR vectors to final approach course.

LANDING RUNWAYS 17L/C/R, 18L/R: From ZMMAN on track 090° to cross PHAUP at 5000 and at 230K, then on track 090°. Expect RADAR vectors to final approach course.

SC-2, 16 APR 2026 to 14 MAY 2026

SC-2, 16 APR 2026 to 14 MAY 2026