

WSTEX TWO DEPARTURE (RNAV)

DALLAS-FORT WORTH, TEXAS

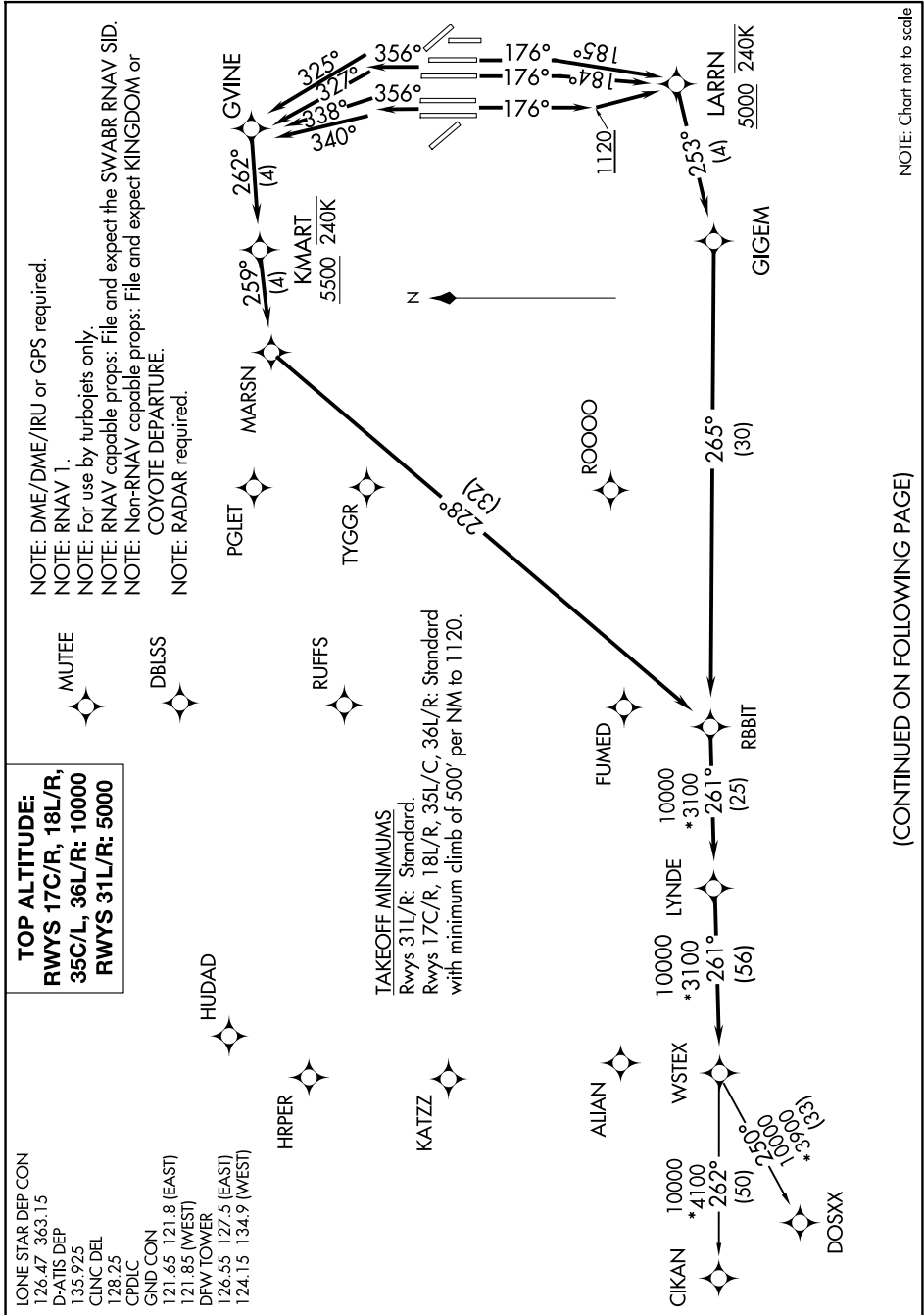
SC-2, 16 APR 2026 to 14 MAY 2026

LONE STAR DEP CON 126.47 363.15
 D-ATIS DEP 135.925
 CLNC DEL 128.25
 CPDLC 128.25
 GND CON 121.65 121.8 (EAST)
 121.85 (WEST)
 DFW TOWER 126.55 127.5 (EAST)
 124.15 134.9 (WEST)

TOP ALTITUDE:
RWYS 17C/R, 18L/R,
35C/L, 36L/R: 10000
RWYS 31L/R: 5000

NOTE: DME/DME/IRU or GPS required.
 NOTE: RNAV 1.
 NOTE: For use by turbojets only.
 NOTE: RNAV capable props: File and expect the SWABR RNAV SID.
 NOTE: Non-RNAV capable props: File and expect KINGDOM or COYOTE DEPARTURE.
 NOTE: RADAR required.

TAKEOFF MINIMUMS
 Rws 31L/R: Standard.
 Rws 17C/R, 18L/R, 35L/C, 36L/R: Standard
 with minimum climb of 500' per NM to 1120.



NOTE: Chart not to scale

(CONTINUED ON FOLLOWING PAGE)

SC-2, 16 APR 2026 to 14 MAY 2026

WSTEX TWO DEPARTURE (RNAV)

(WSTEX2.WSTEX) 04FEB16

DALLAS-FORT WORTH, TEXAS

DALLAS-FORT WORTH INTL (DFW)