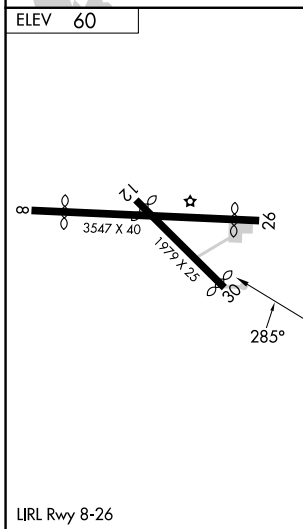
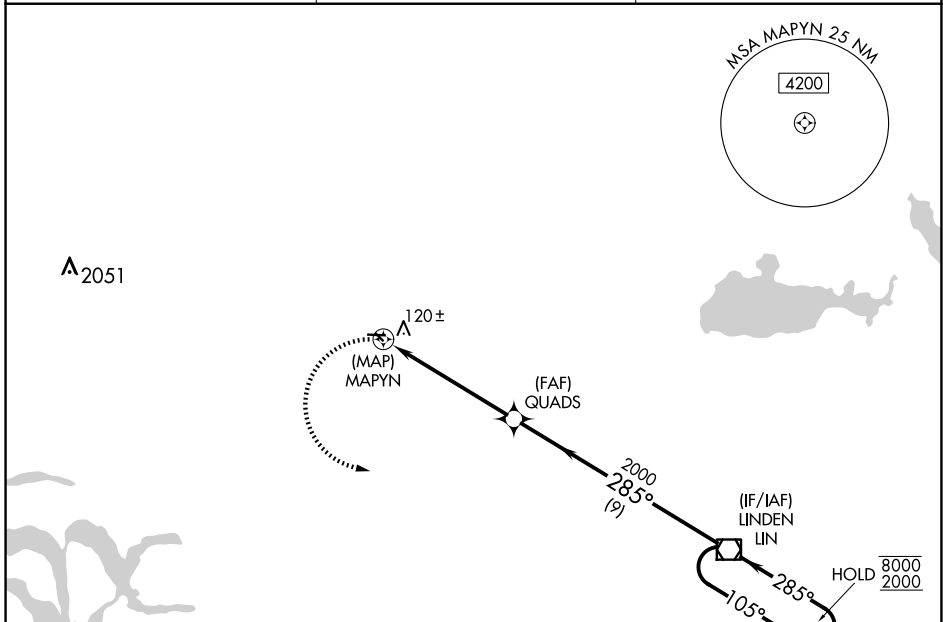


APP CRS 285°	Rwy Idg TDZE Apt Elev	N/A N/A 60
------------------------	-----------------------------	---------------------------------------

RNAV (GPS)-B

LODI (103)

RNP APCH.		MISSED APPROACH: Climbing left turn to 2000 direct LIN VOR/DME and hold.
▼	Procedure NA at night.	
▲NA	Use Stockton altimeter setting; when not received, use Sacramento Intl altimeter setting and increase all MDA 40 feet.	
SCK ASOS 118.25	NORCAL APP CON 125.1 363.2	CTAF 122.9



NoPT for arrival on LIN VOR/DME airway radials 124 CW 158.

2000	LIN	QUADS	LIN VOR/DME	4 NM Holding Pattern
2000	MAPYN	285°	105°	8000
2000	285°	285°	285°	2000
5.5 NM		9 NM		
CATEGORY	A	B	C	D
☑ CIRCLING	640-1 580 (600-1)		NA	

SW-2, 16 APR 2026 to 14 MAY 2026

SW-2, 16 APR 2026 to 14 MAY 2026