

WAAS CH 57903 W08A	APP CRS 083°	Rwy Idg TDZE Apt Elev	5102 3260 3279
--	------------------------	-----------------------------	---

RNAV (GPS) RWY 8

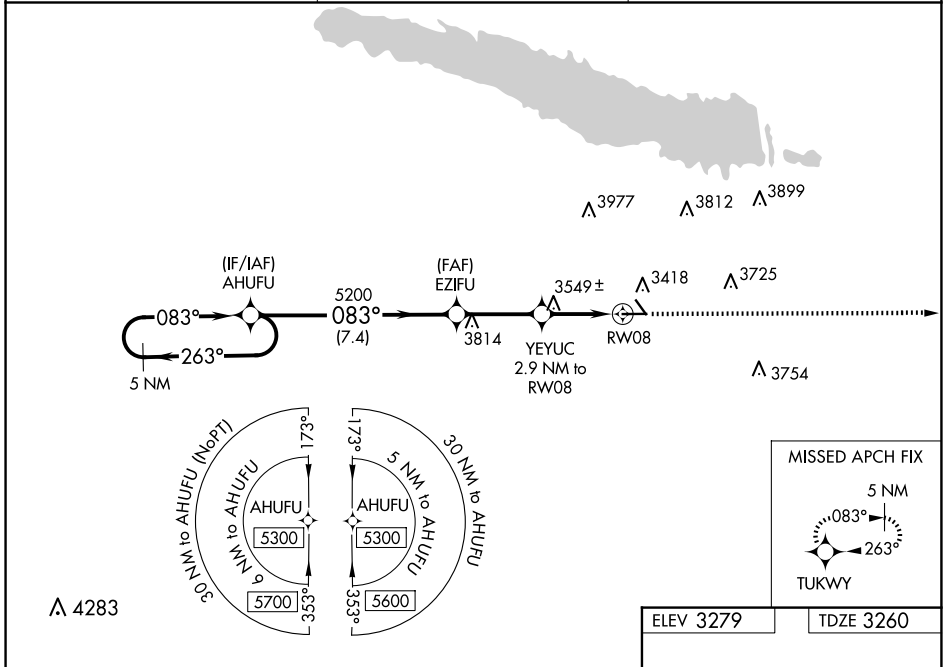
SEARLE FLD (OGA)

RNP APCH.

▽ For uncompensated Baro-VNAV systems, LNAV/VNAV NA below -21°C or above 54°C. When local altimeter setting not received, use Imperial altimeter setting and increase all DA 86 feet and all MDA 100 feet, increase LPV all Cats visibility 1/8 SM, LNAV/VNAV all Cats and Circling Cat B visibility 1/4 SM. Baro-VNAV NA when using Imperial altimeter setting.

▲ MISSED APPROACH: Climb to 5200 direct TUKWY and hold.

AWOS-3 121.275	DENVER CENTER 132.7 397.85	UNICOM 122.8 (CTAF) 0
--------------------------	--------------------------------------	---------------------------------



NC-2, 16 APR 2026 to 14 MAY 2026

NC-2, 16 APR 2026 to 14 MAY 2026

5 NM Holding Pattern		AHUFU		5200	TUKWY
5300 ← 263°		→ 083°		5200	▲
GP 3.00°		083°		YEYUC	* LNAV only.
TCH 40		5200		2.9 NM to RW08	
7.4 NM		3.1 NM		2.9 NM	
CATEGORY	A	B	C	D	
LPV DA	3510-1	250 (300-1)		NA	
LNAV/VNAV DA	3865-2¼	605 (600-2¼)		NA	
LNAV MDA	3800-1	540 (600-1)		NA	
CIRCLING	3940-1 661 (700-1)	4000-1 721 (800-1)		NA	

ELEV 3279 | TDZE 3260

083° to RW08

MRL Rwy 8-26 and 13-31 0