

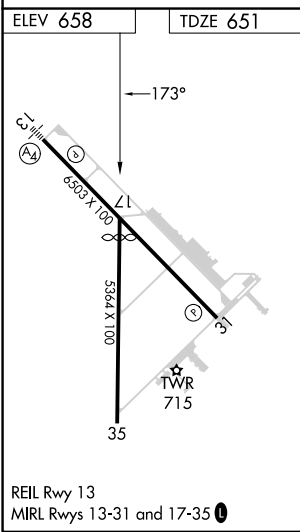
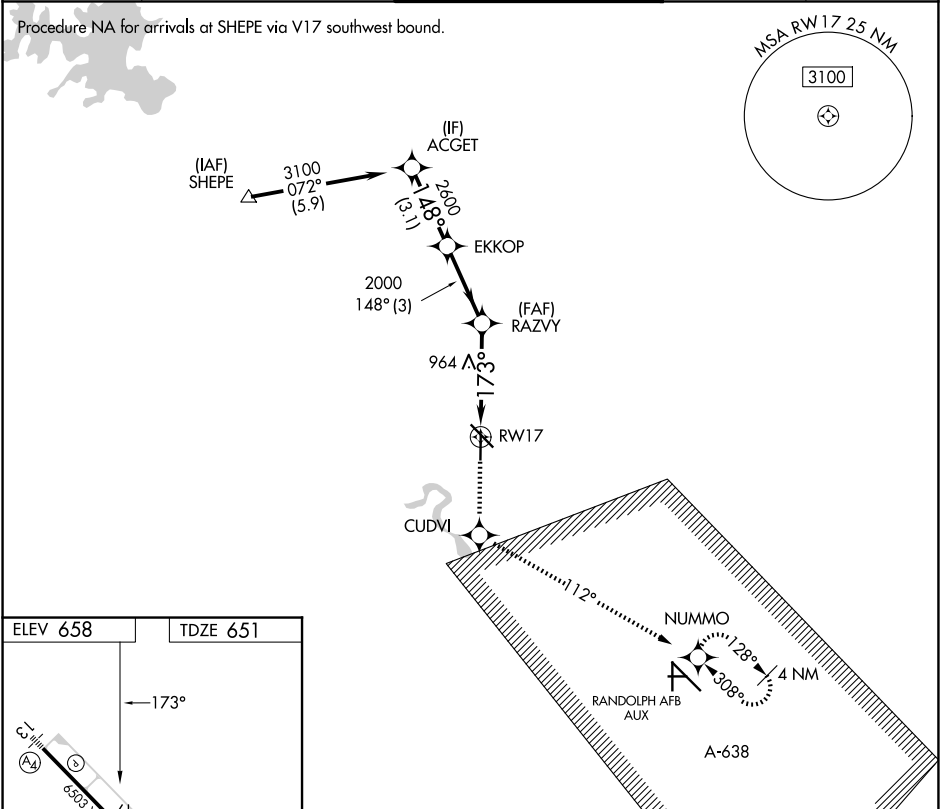
APP CRS	Rwy Ldg	4842
173°	TDZE	651
	Apt Elev	658

RNAV (GPS) RWY 17

NEW BRAUNFELS NTL (B.A.Z)

RNP APCH.	MISSED APPROACH: Climb to 3500 direct CUDVI and via 112° track to NUMMO and hold, continue climb-in-hold to 3500.
<p>▼ When local altimeter setting not received, use San Marcos Rgnl altimeter setting and increase all MDAs 60 feet and visibility Cat C ¼ SM. VDP NA when using San Marcos Rgnl altimeter setting.</p>	

ATIS 119.325	SAN ANTONIO APP CON 124.45 335.625	NEW BRAUNFELS TOWER ★ 127.05 (CTAF) 285.4	GND CON 120.175	UNICOM 122.7
------------------------	--	---	---------------------------	------------------------



3500	CUDVI	NUMMO	ACGET
↑	✧	✧	
	tr 112°		
	1.6 NM to RW17	RAZVY	EKKOP
	3.03° TCH 45	2000	2600
	173°		148°
	1.6 NM	2.5 NM	3 NM
			3.1 NM
CATEGORY	A	B	C
LNAV MDA	1220-1	569 (600-1)	1220-1 5/8 569 (600-1 5/8)
			1220-1 3/4 569 (600-1 3/4)

Procedure Turn NA

SC-3, 16 APR 2026 to 14 MAY 2026

SC-3, 16 APR 2026 to 14 MAY 2026