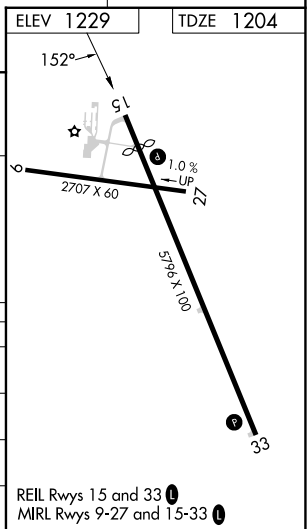
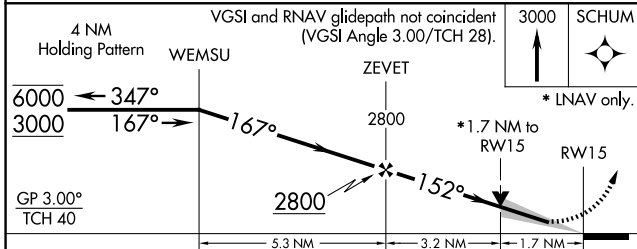
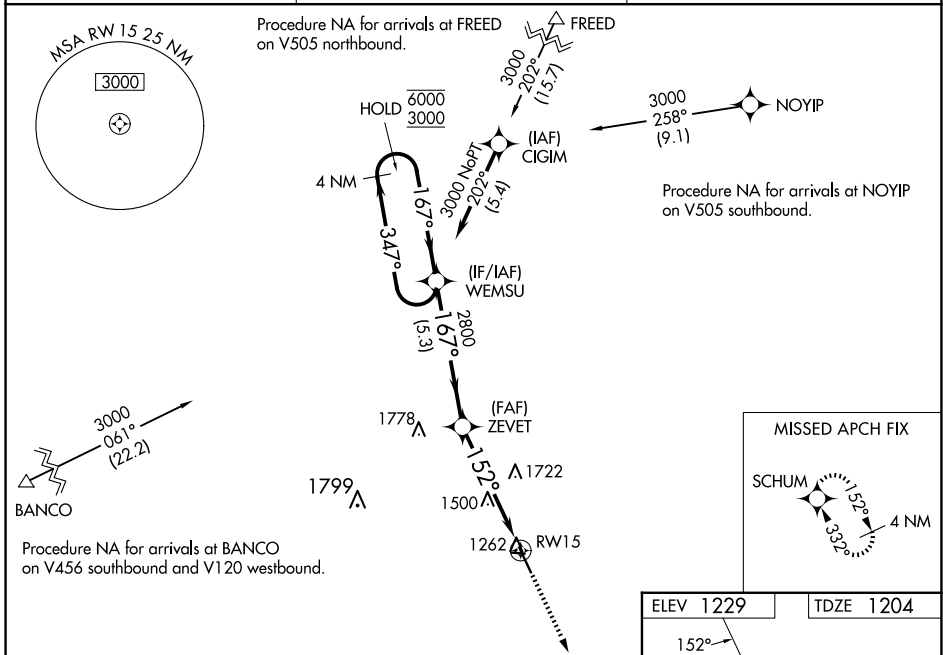


WAAS CH <b>90428</b> <b>W15A</b>	APP CRS <b>152°</b>	Rwy Idg TDZE <b>1204</b> Apt Elev <b>1229</b>
--	------------------------	---

# RNAV (GPS) RWY 15

FOREST CITY MUNI/TRIMBLE FLD (FXY)

RNP APCH.		<p>MISSED APPROACH: Climb to 3000 direct to SCHUM and hold.</p>
<p><b>⚠</b> Circling to Rwy 9, 27 and 33 NA at night. For uncompensated Baro-VNAV systems, LNAV/VNAV NA below -29°C or above 54°C. When local altimeter setting not received, use Mason City altimeter setting and increase LPV DA to 1488 feet; LNAV/VNAV DA to 1516 feet; increase all MDA 40 feet. VDP and Baro-VNAV NA when using Mason City altimeter setting.</p>		
AWOS-3 <b>123.925</b>	MINNEAPOLIS CENTER <b>127.3 257.675</b>	UNICOM <b>122.8 (CTAF) ①</b>



CATEGORY	A	B	C	D
LPV DA		1454-1	250 (300-1)	
LNAV/VNAV DA		1482-1	278 (300-1)	
LNAV MDA	1760-1	556 (600-1)	1760-1 5/8	556 (600-1 5/8)
CIRCLING	1760-1	531 (600-1)	2040-2 1/2 811 (900-2 1/2)	2040-2 3/4 811 (900-2 3/4)

REIL Rws 15 and 33 ①  
MRL Rws 9-27 and 15-33 ①

NC-3, 16 APR 2026 to 14 MAY 2026

NC-3, 16 APR 2026 to 14 MAY 2026