

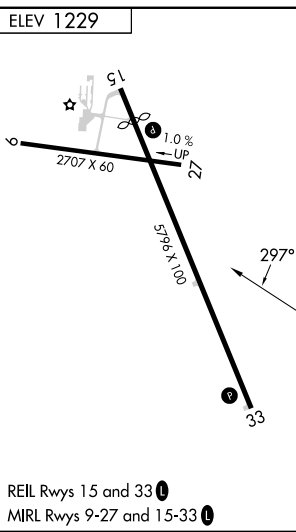
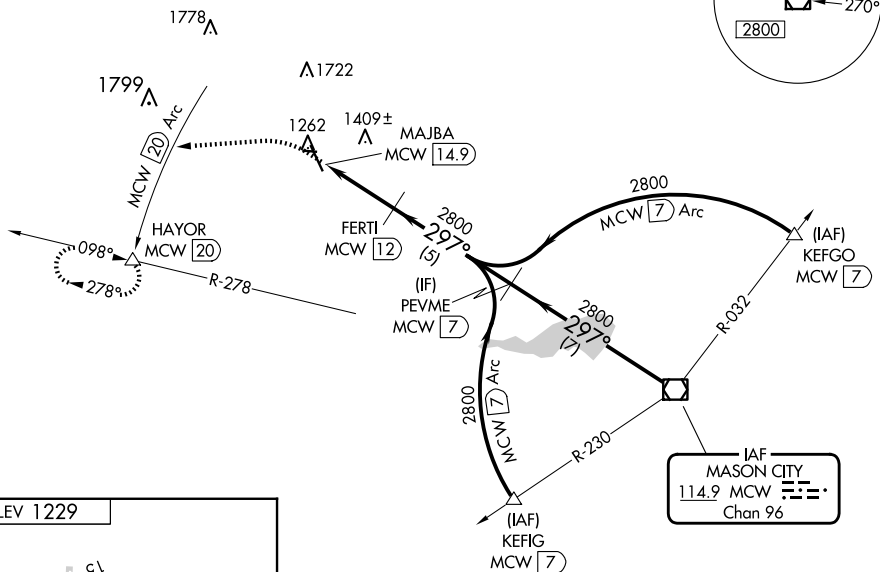
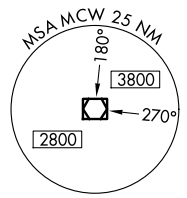
VOR/DME MCW <b>114.9</b> Chan <b>96</b>	APP CRS <b>297°</b>	Rwy Idg TDZE Apt Elev <b>N/A</b> <b>N/A</b> <b>1229</b>
---	------------------------	--

# VOR-A

FOREST CITY MUNI/TRIMBLE FLD (FXY)

DME required.	MISSED APPROACH: Climb to 3000 on heading 260° to MCW 20 DME Arc and on MCW 20 DME Arc counterclockwise to HAYOR/20 DME and hold.
---------------	---

AWOS-3 <b>123.925</b>	MINNEAPOLIS CENTER <b>127.3 257.675</b>	UNICOM <b>122.8 (CTAF) 1</b>
--------------------------	--	---------------------------------



Procedure NA for arrivals on MCW VOR/DME airway radials 278 CW 343.

3000	MCW 20 Arc counter-clockwise	HAYOR	FERTI MCW 12	PEVME MCW 7	MCW VOR/DME
↑ hdg 260°		MAJBA MCW 14.9	2800	2800	297° 2800
		← 2.9 NM	← 5 NM	← 7 NM	
CATEGORY	A	B	C	D	
CIRCLING	1680-1 451 (500-1)	1760-1 531 (600-1)		NA	

NC-3, 16 APR 2026 to 14 MAY 2026

NC-3, 16 APR 2026 to 14 MAY 2026