

WAAS CH <b>82408</b> <b>W17A</b>	APP CRS <b>174°</b>	Rwy Ldg <b>5399</b> TDZE <b>2013</b> Apt Elev <b>2013</b>
--	------------------------	--

# RNAV (GPS) RWY 17

ELK CITY RGNL BUSINESS (ELK)

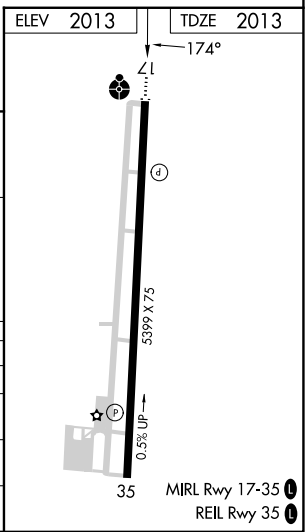
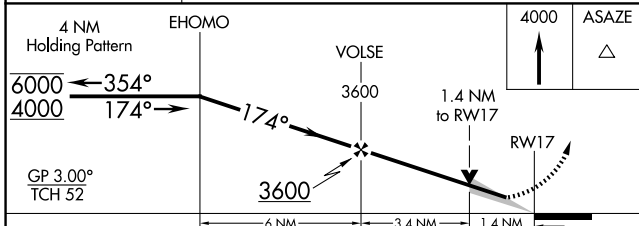
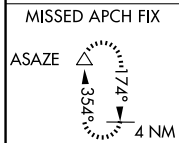
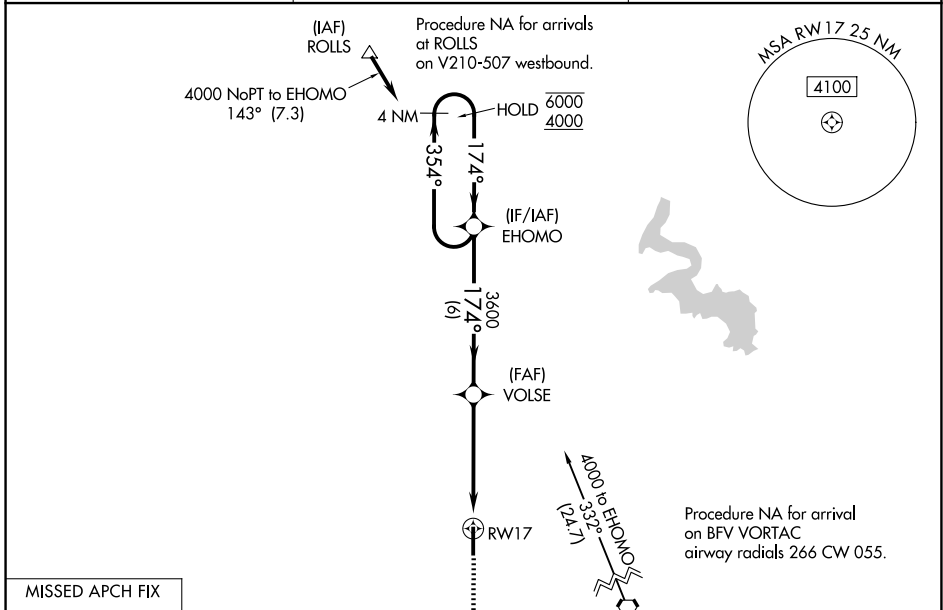
RNP APCH - GPS.

**▽** For uncompensated Baro-VNAV systems, LNAV/VNAV NA below -18°C or above 54°C. Inop table does not apply to LPV all Cats and LNAV Cats C/D. For inop ALS increase LNAV/VNAV Cats A/B visibility to 7/6 SM.

**⚠** MISSED APPROACH: Climb to 4000 direct ASAZE and hold.

ODALS

AWOS-3 <b>118.225</b>	FORT WORTH CENTER <b>128.4 269.37</b>	UNICOM <b>122.8 (CTAF) 0</b>
--------------------------	--	---------------------------------



CATEGORY	A	B	C	D
LPV DA		2263-3/4	250 (300-3/4)	
LNAV/VNAV DA		2305-3/4	292 (300-3/4)	
LNAV MDA	2520-3/4 507 (600-3/4)		2520-13/8 507 (600-13/8)	
CIRCLING	2520-1 507 (600-1)	2680-1 667 (700-1)	2680-13/4 667 (700-13/4)	2940-3 927 (1000-3)

SC-1, 16 APR 2026 to 14 MAY 2026

SC-1, 16 APR 2026 to 14 MAY 2026