

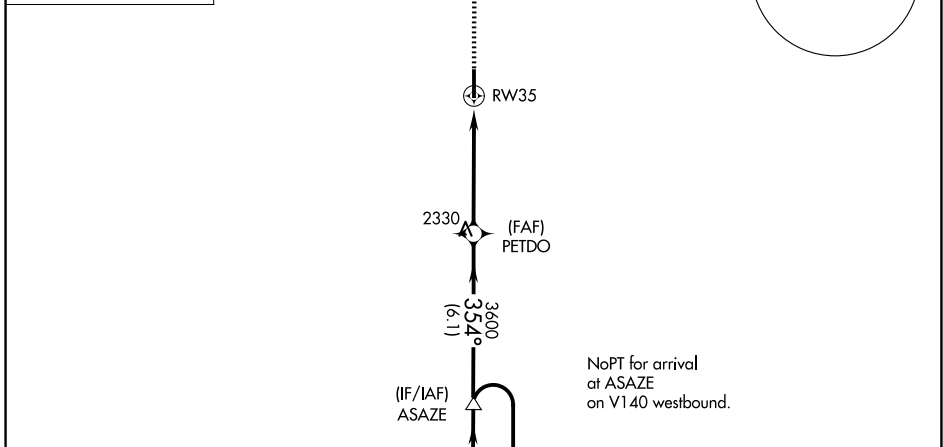
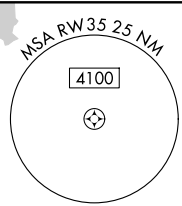
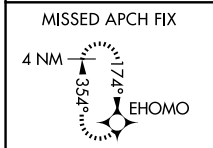
WAAS CH <b>53508</b> <b>W35A</b>	APP CRS <b>354°</b>	Rwy Ldg TDZE <b>1984</b> Apt Elev <b>2013</b>
--	------------------------	---

# RNAV (GPS) RWY 35

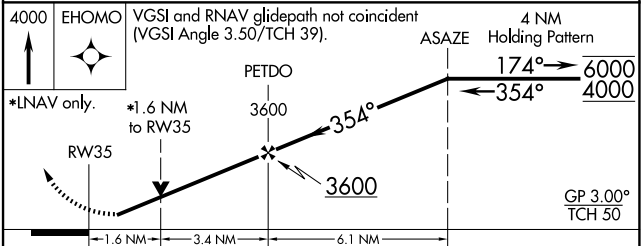
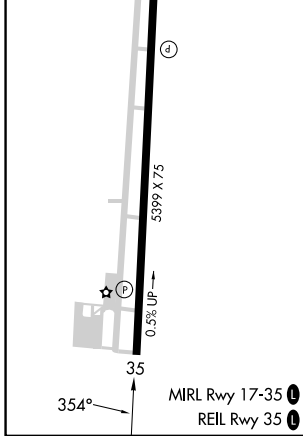
ELK CITY RGNL BUSINESS (ELK)

RNP APCH.	MISSED APPROACH: Climb to 4000 direct EHOMO and hold.
<p><b>▼</b> Rwy 35 helicopter visibility reduction below 3/4 SM NA.  <b>▲</b> For uncompensated Baro-VNAV systems, LNAV/VNAV NA below -18°C or above 54°C.</p>	

AWOS-3 <b>118.225</b>	FORT WORTH CENTER <b>128.4 269.37</b>	UNICOM <b>122.8 (CTAF) 0</b>
--------------------------	--	---------------------------------



ELEV 2013	TDZE 1984
-----------	-----------



CATEGORY	A	B	C	D
LPV DA		2234-7/8	250 (300-7/8)	
LNAV/VNAV DA		2377-13/8	393 (400-13/8)	
LNAV MDA	2640-1	656 (700-1)	2640-1 7/8	656 (700-1 7/8)
CIRCLING	2640-1 627 (700-1)	2680-1 667 (700-1)	2680-1 3/4 667 (700-1 3/4)	2940-3 927 (1000-3)

SC-1, 16 APR 2026 to 14 MAY 2026

SC-1, 16 APR 2026 to 14 MAY 2026