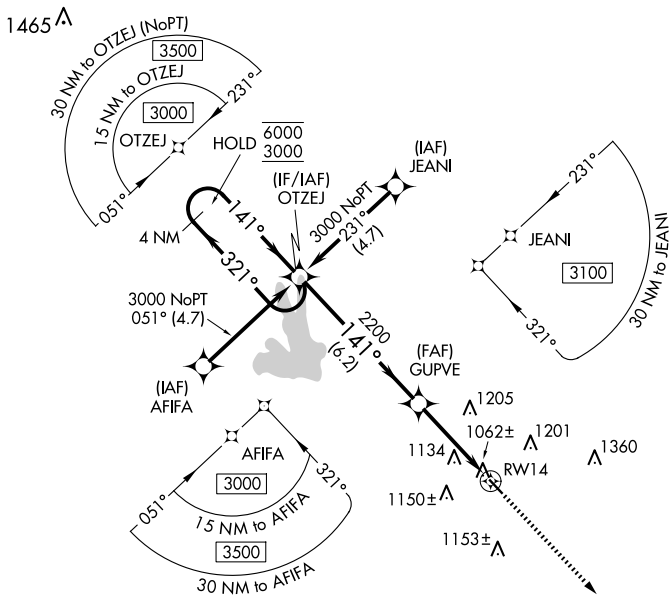


WAAS CH 70429 W14A	APP CRS 141°	Rwy Idg TDZE Apt Elev	3201 958 958
--	------------------------	-----------------------------	---

RNAV (GPS) RWY 14

GRIFFIN-SPALDING COUNTY (6A2)

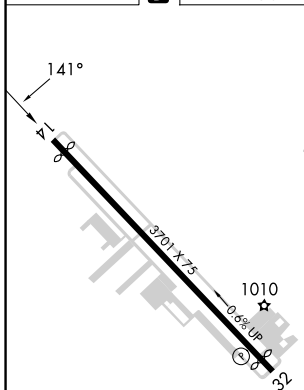
RNP APCH - GPS.		MISSED APPROACH: Climb to 3000 direct LUFEV and hold.	
<p>Procedure NA at night. Rwy 14 helicopter visibility reduction below 1 SM NA.</p>			
AWOS-3 119.750	ATLANTA APP CON 128.575 343.675	CLNC DEL 128.575 343.675	UNICOM 123.075 (CTAF) 0



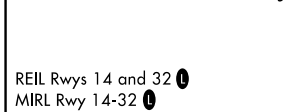
SE-4, 16 APR 2026 to 14 MAY 2026

SE-4, 16 APR 2026 to 14 MAY 2026

ELEV 958	D	TDZE 958
----------	----------	----------



4 NM Holding Pattern		Visual Segment - Obstacles.		3000	LUFEV
6000 ← 321°		174°		↑	✧
3000 → 141°		2200			
6.2 NM		3.8 NM			
CATEGORY	A	B	C	D	
LP MDA	1320-1	362 (400-1)	NA		
LNAV MDA	1440-1	482 (500-1)	NA		



GRIFFIN, GEORGIA
Amdt 1 26DEC24

33°14'N-84°16'W

GRIFFIN-SPALDING COUNTY (6A2)
RNAV (GPS) RWY 14