

WAAS CH <b>93920</b> <b>W31A</b>	APP CRS <b>308°</b>	Rwy Idg TDZE Apt Elev	<b>4010</b> <b>1123</b> <b>1123</b>
--	------------------------	-----------------------------	---

# RNAV (GPS) RWY 31

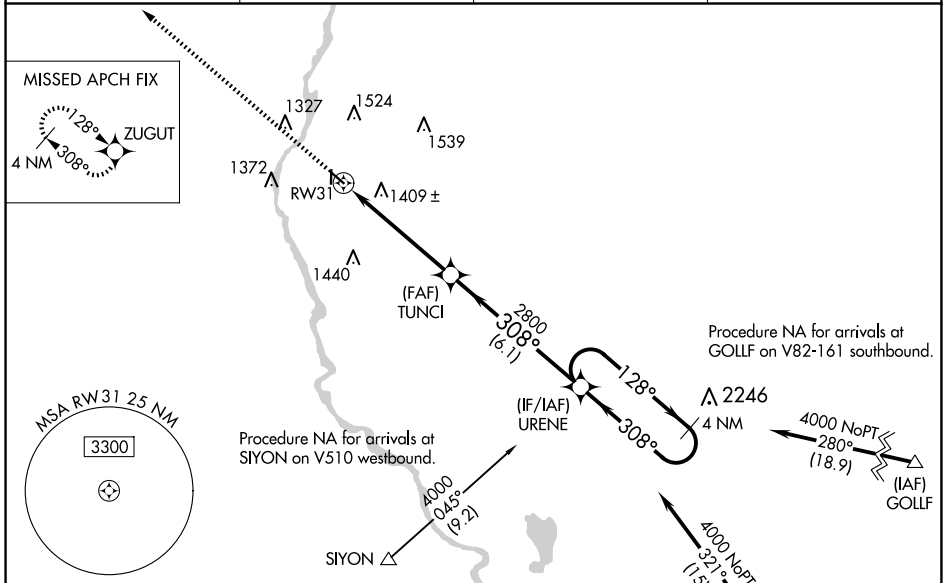
LITTLE FALLS/MORRISON COUNTY-LINDBERGH FLD (LXL)

RNP APCH.

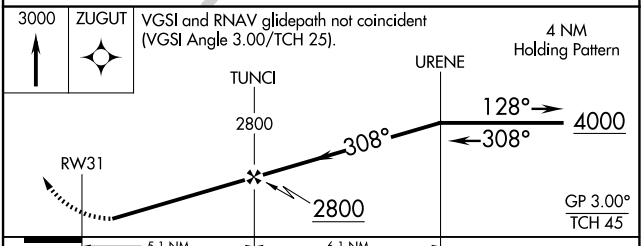
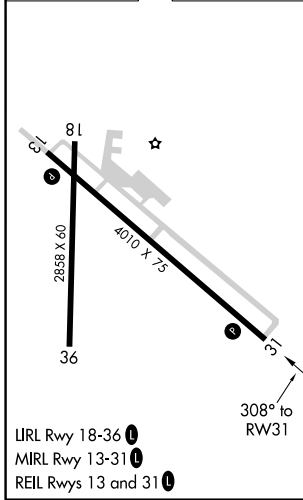
**⚠** Baro-VNAV NA when using St Cloud altimeter setting. For uncompensated Baro-VNAV systems, LNAV/VNAV NA below -17°C or above 32°C. Rwy 31 visibility reduction below ¼ SM by helicopters NA. When local altimeter setting not received, use St. Cloud altimeter setting and increase all DAs 76 feet and all MDAs 80 feet; increase LPV all Cats visibility ½ SM and LNAV/VNAV all Cats, LNAV Cat C/D and Circling Cat C/D visibility ¼ SM. Circling Rwy 18, 36 NA.

MISSED APPROACH: Climb to 3000 direct ZUGUT and hold.

AWOS-3 <b>119.45</b>	MINNEAPOLIS CENTER <b>118.05 239.0</b>	GCO <b>121.725</b>	UNICOM <b>122.8 (CTAF) 0</b>
-------------------------	---	-----------------------	---------------------------------



ELEV 1123	<b>D</b>	TDZE 1123
-----------	----------	-----------



CATEGORY	A	B	C	D
LPV DA		1517-1 <sup>3</sup> / <sub>8</sub>	394 (400-1 <sup>3</sup> / <sub>8</sub> )	
LNAV/VNAV DA		1749-2 <sup>1</sup> / <sub>4</sub>	626 (700-2 <sup>1</sup> / <sub>4</sub> )	
LNAV MDA	1660-1	537 (600-1)	1660-1 <sup>1</sup> / <sub>2</sub>	537 (600-1 <sup>1</sup> / <sub>2</sub> )
CIRCLING	1700-1 577 (600-1)	1800-1 677 (700-1)	1840-2 717 (800-2)	2000-2 <sup>3</sup> / <sub>4</sub> 877 (900-2 <sup>3</sup> / <sub>4</sub> )

# RNAV (GPS) RWY 31

NC-1, 16 APR 2026 to 14 MAY 2026

NC-1, 16 APR 2026 to 14 MAY 2026