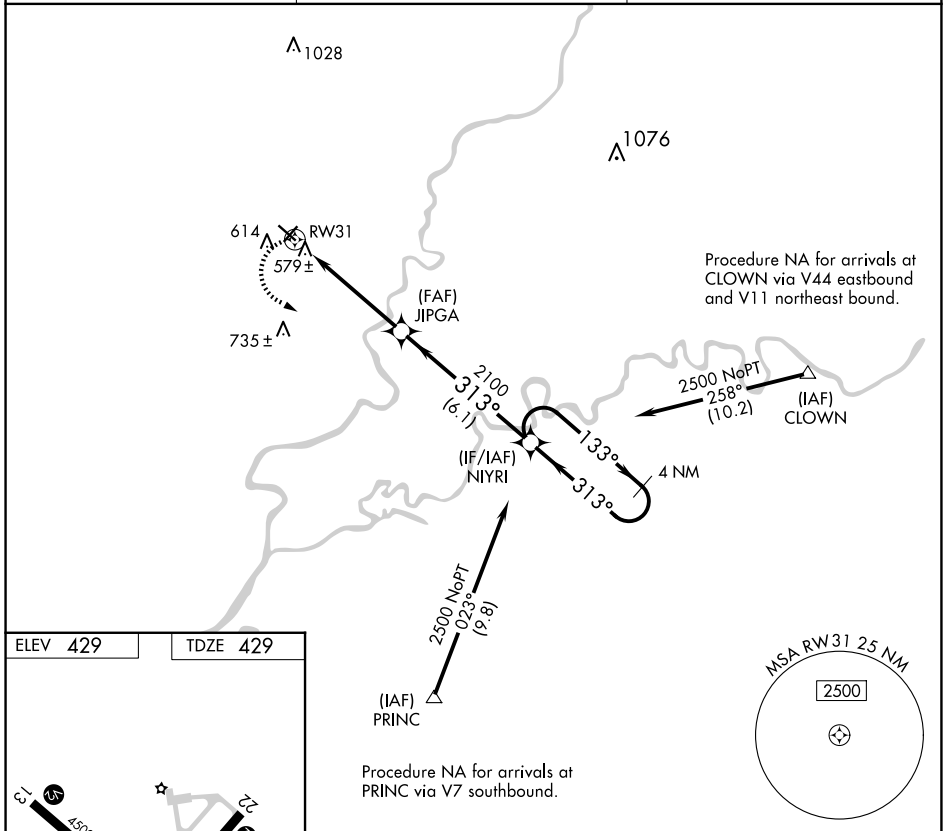


| | | |
|-------------|----------|-------------|
| APP CRS | Rwy Idg | 4500 |
| 313° | TDZE | 429 |
| | Apt Elev | 429 |

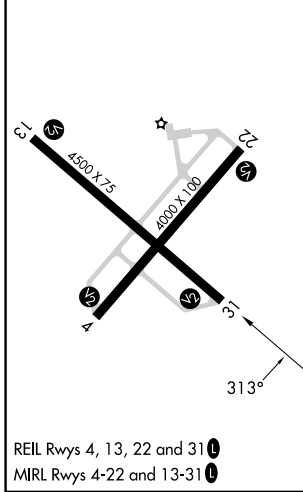
RNAV (GPS) RWY 31

MOUNT CARMEL MUNI (AJG)

| | | |
|---|---|--|
| RNP APCH. | | MISSED APPROACH: Climbing left turn to 2500 direct NIYRI and hold. |
| <p>NA When local altimeter setting not received, use Lawrenceville altimeter setting and increase all MDA 40 feet and increase LNAV Cat D visibility ½ mile.</p> | | |
| AWOS-3 134.9 | EVANSVILLE APP CON★ 125.6 343.7 | UNICOM 122.7 (CTAF) 0 |



| | |
|----------|----------|
| ELEV 429 | TDZE 429 |
|----------|----------|



| | | | | | |
|----------|-------|--|--------|--------------|-----------------|
| 2500 | NIYRI | VGSI and descent angles not coincident (VGSI Angle 3.00/TCH 25). | 4 NM | NIYRI | Holding Pattern |
| | | JIPGA | 2100 | 133° | 2500 |
| RWY 31 | | 5 NM | 6.1 NM | 313° | 313° |
| CATEGORY | A | B | C | D | |
| LNAV MDA | 840-1 | 411 (500-1) | 840-1¼ | 411 (500-1¼) | |

EC-3, 16 APR 2026 to 14 MAY 2026

EC-3, 16 APR 2026 to 14 MAY 2026