

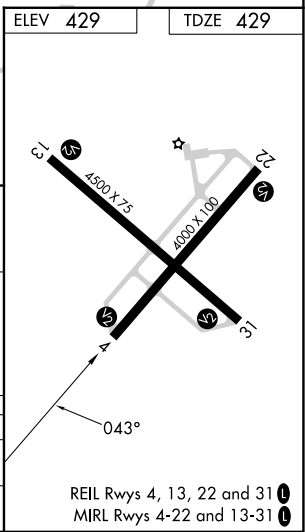
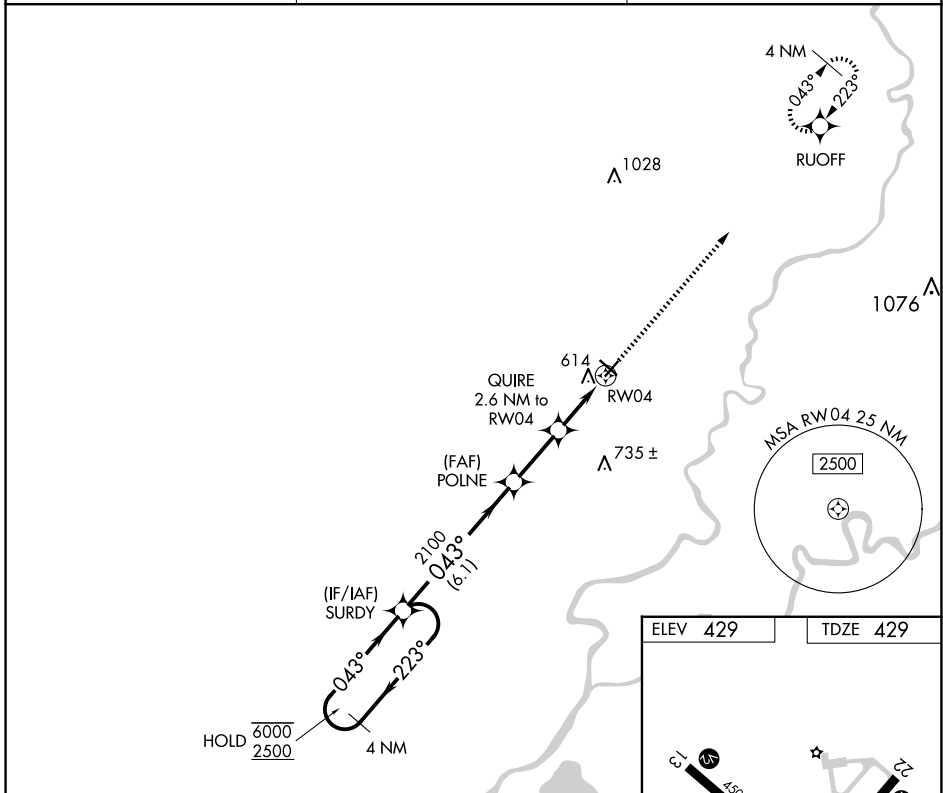
APP CRS	Rwy Idg	4000
043°	TDZE	429
	Apt Elev	429

RNAV (GPS) RWY 4

MOUNT CARMEL MUNI (AJG)

RNP APCH.	MISSED APPROACH: Climb to 2500 direct RUOFF and hold.
▼ Rwy 4 helicopter visibility reduction below 3/4 SM NA. For uncompensated Baro-VNAV systems, LNAV/VNAV NA below -15°C or above 54°C.	

AWOS-3 134.9	EVANSVILLE APP CON* 125.6 343.7	UNICOM 122.7 (CTAF)
------------------------	---	-------------------------------



4 NM Holding Pattern	SURDY	VGSi and RNAV glidepath not coincident (VGSi Angle 3.00/TCH 23).		2500 RUOFF
6000 ← 223°	2500 → 043°	POLNE 2100	QUIRE 2.6 NM to RW04	*LNAV only
GP 3.00°	TCH 40	2100	*1.5 NM to RW04	
		← 6.1 NM →	← 2.5 NM →	← 1.1 NM →
CATEGORY	A	B	C	D
LNAV/VNAV	DA	937-1 3/4	508 (600-1 3/4)	NA
LNAV MDA		920-1	491 (500-1)	920-1 1/4
			491 (500-1 1/4)	NA

EC-3, 16 APR 2026 to 14 MAY 2026

EC-3, 16 APR 2026 to 14 MAY 2026