

APP CRS **033°**  
 Rwy Ldg **5132**  
 TDZE **4793**  
 Apt Elev **4831**

# RNAV (GPS) RWY 3

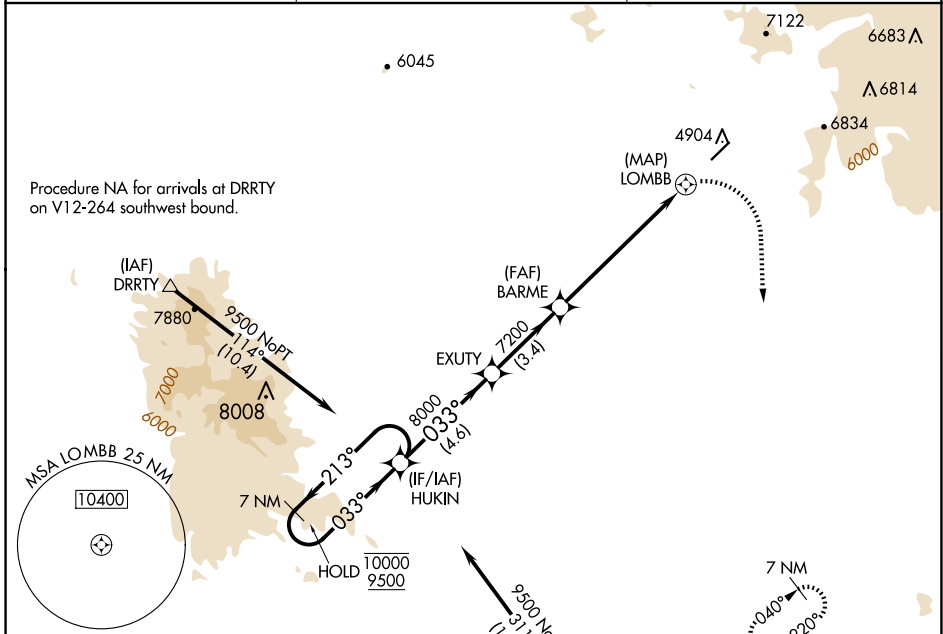
SEDONA (SE/Z)

RNP APCH - GPS.

**▽** Circling NA northwest of Rwy 3-21. Circling Rwy 21 NA at night. When local altimeter not received, procedure NA.

**△** MISSED APPROACH: Climbing right turn to 12000 direct MINGY and hold, continue climb-in-hold to 12000

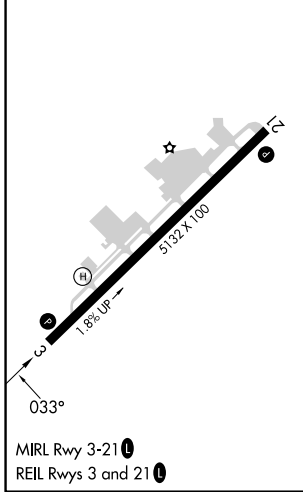
AWOS-3PT **118.525**      PHOENIX APP CON **126.375 236.775**      UNICOM **123.0 (CTAF) 0**



SW-4, 16 APR 2026 to 14 MAY 2026

SW-4, 16 APR 2026 to 14 MAY 2026

ELEV **4831**      TDZE **4793**



7 NM Holding Pattern		HUKIN	EXUTY	BARME	12000	MINGY
10000 ← 213°		9500 → 033°	033°	8000	3.00° TCH 45	1.6 NM to LOMBB
			7200			LOMBB
						1.3
CATEGORY	A	B	C	D		
LNAV MDA	5720-1½ 927 (1000-1½)	5740-1½ 947 (1000-1½)	6460-3 1667 (1700-3)	6640-3 1847 (1900-3)		
<b>C</b> CIRCLING	5720-1½ 889 (900-1½)	5880-1½ 1049 (1100-1½)	7080-3 2249 (2300-3)	NA		