

WAAS CH <b>82404</b> <b>W28A</b>	APP CRS <b>281°</b>	Rwy Ldg TDZE Apt Elev	<b>4001</b> <b>928</b> <b>928</b>
--	------------------------	-----------------------------	---

# RNAV (GPS) RWY 28

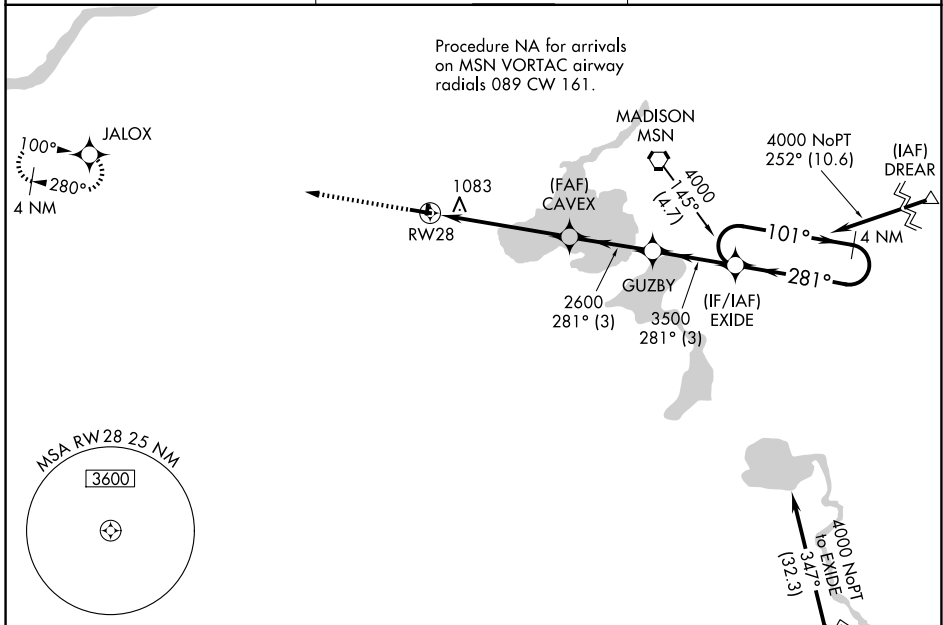
MIDDLETON MUNI/MOREY FLD (C29)

RNP APCH - GPS.

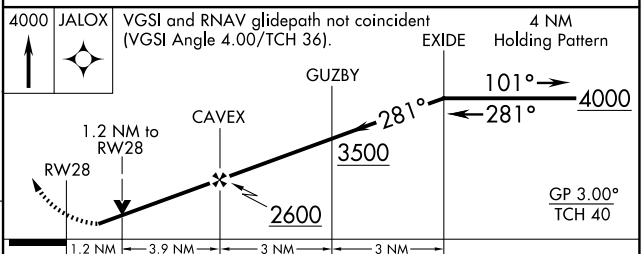
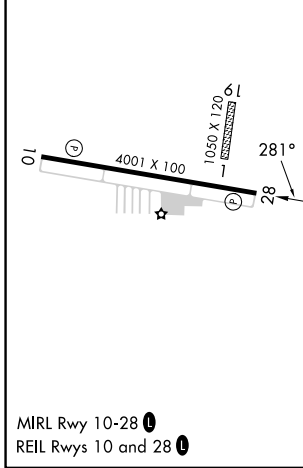
**Baro-VNAV NA.** Helicopter visibility reduction below 3/4 SM NA. When local altimeter setting not received, use Dane County Rgnl/Truax Fld altimeter setting. VDP NA when using Dane County Rgnl/Truax Fld altimeter setting. Circling NA to Rwy's 1 and 19.

**MISSED APPROACH:** Climb to 4000 direct JALOX and hold.

AWOS-3 <b>118.675</b>	MADISON APP CON * <b>135.45 343.7</b>	UNICOM <b>123.0</b> (CTAF) <b>0</b>
--------------------------	--	--



ELEV <b>928</b>	TDZE <b>928</b>
-----------------	-----------------



CATEGORY	A	B	C	D
LPV DA	1326-1½	398 (400-1½)		NA
LNAV/VNAV DA	1442-1¾	514 (600-1¾)		NA
LNAV MDA	1480-1	552 (600-1)	1480-1½ 552 (600-1½)	NA
CIRCLING	1560-1 632 (700-1)	1640-1 712 (800-1)	1660-2 732 (800-2)	NA

EC-3, 16 APR 2026 to 14 MAY 2026

EC-3, 16 APR 2026 to 14 MAY 2026