

APP CRS <b>189°</b>	Rwy ldg <b>5499</b>
	TDZE <b>968</b>
	Apt Elev <b>988</b>

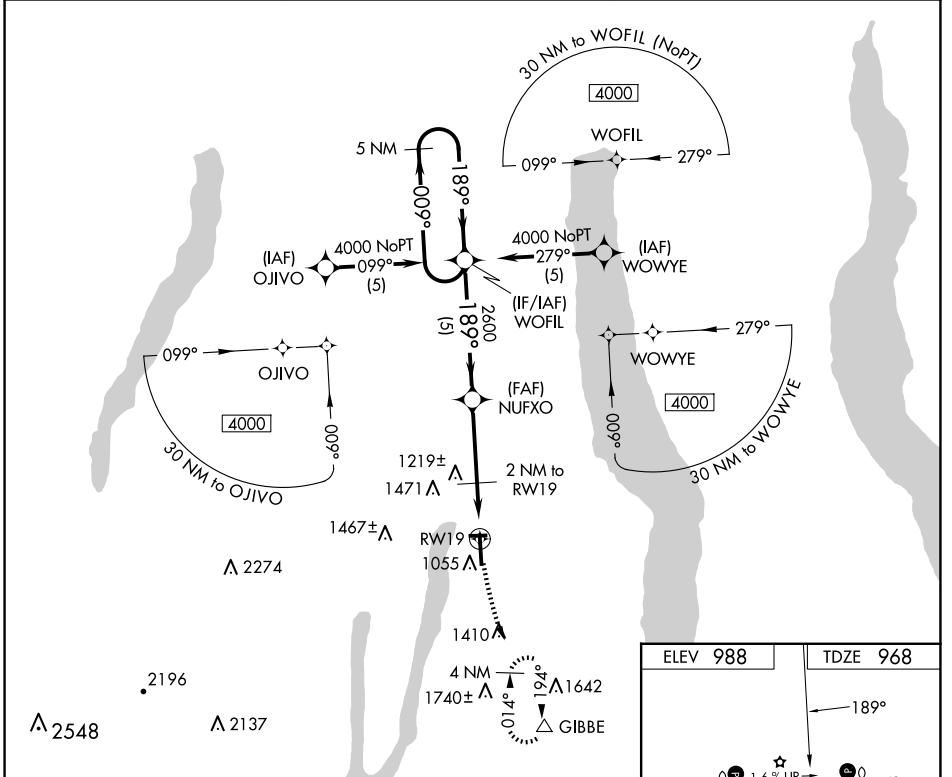
# RNAV (GPS) RWY 19

PENN YAN/YATES COUNTY (P.E.O)

**▼** DME/DME RNP-0.3 NA. When local altimeter setting not received, use Elmira altimeter setting; increase all MDA 80 feet and visibility S-19 Cat C and D, and Circling Cat B and C ¼ SM.

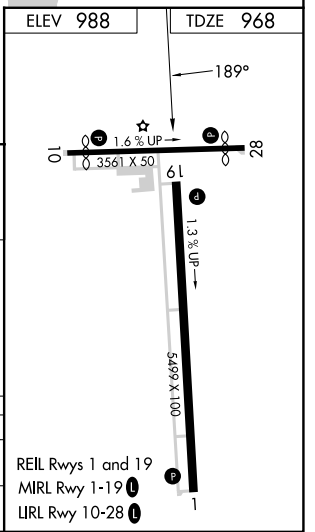
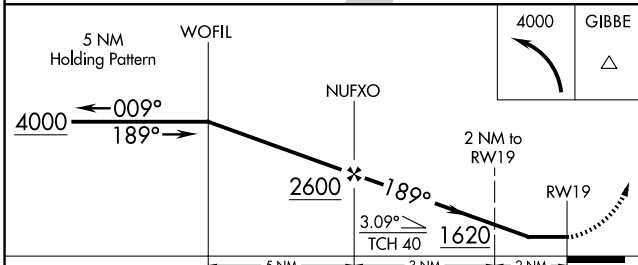
**▲** MISSED APPROACH: Climbing left turn to 4000 direct GIBBE and hold, continue climb-in-hold to 4000.

ASOS <b>121.175</b>	ELMIRA APP CON * <b>124.3 257.8</b>	UNICOM <b>123.0 (CTAF) 0</b>
------------------------	----------------------------------------	---------------------------------



NE-2, 16 APR 2026 to 14 MAY 2026

NE-2, 16 APR 2026 to 14 MAY 2026



CATEGORY	A	B	C	D
LNVA MDA	1400-1	432 (500-1)	1400-1¼ 432 (500-1¼)	1400-1½ 432 (500-1½)
CIRCLING	1500-1 512 (600-1)	1720-1 732 (800-1)	1820-2½ 832 (900-2½)	1980-3 992 (1000-3)

REIL Rwy 1 and 19  
MIRL Rwy 1-19  
LRL Rwy 10-28